



Montaažiskeem / Mounting Instructions

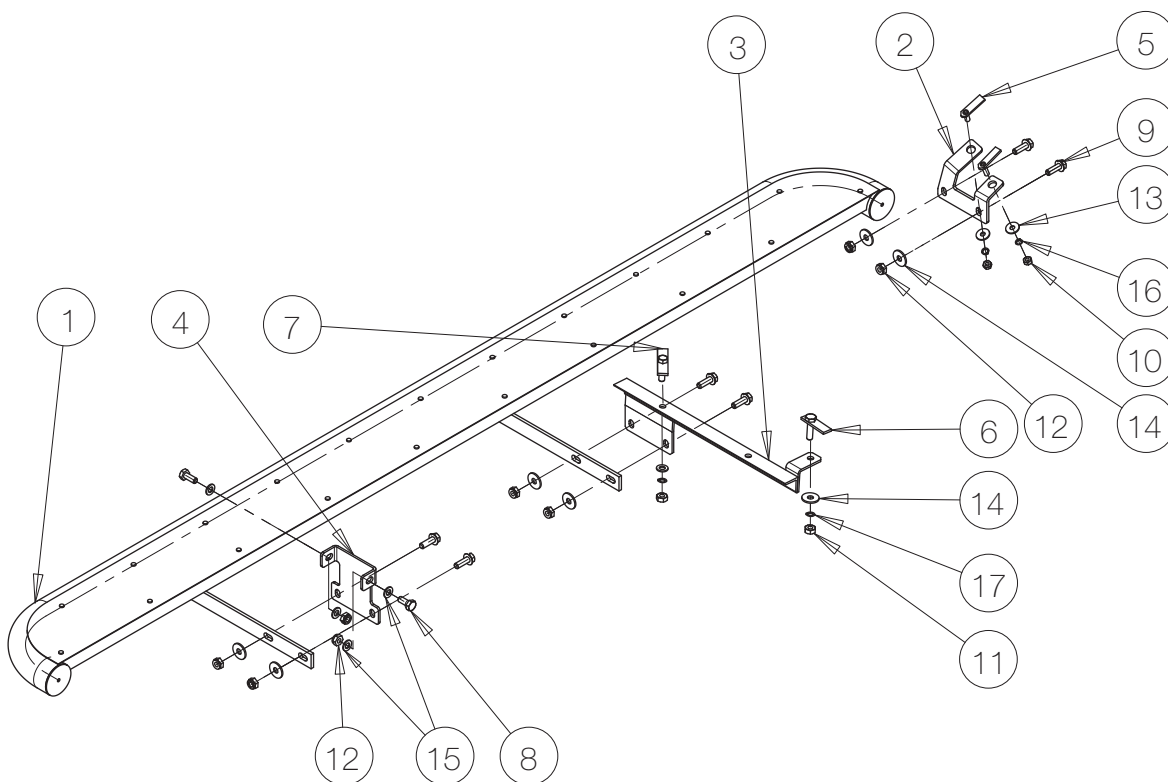
Ford Connect

Astmelaud Ø 60 / Sideboard step Ø 60

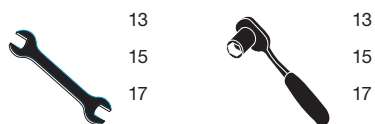
Art. 806265



1. Astmelaud / Sideboard step	1+1
2. Kronstein / bracket	1+1
3. Kronstein / bracket	1+1
4. Kronstein / bracket	2
5. T-polt / T-bolt M8	4
6. T-polt / T-bolt M10	2
7. T-polt / T-bolt M10	2
8. Polt / bolt M10x25 mm	4
9. Polt / bolt M10x30 mm Wülock	12
10. Mutter / nut M8 DIN 934	4
11. Mutter / nut M10 DIN 934	4
12. Mutter / nut M10 DIN 985	16
13. Seib / washer 8,4x24x2 mm	4
14. Seib / washer 10,5x30x2,5 mm	14
15. Seib / washer 10,5x20x2 mm	10
16. Vedruseib / spring washer A8	4
17. Vedruseib / spring washer A10	4



Vajalikud tööriistad / Required Tools



Montaažiskeem / Mounting Instructions

Ford Connect

Astmelaud Ø 60 / Sideboard step Ø 60

Art. 806265

Paigaldamine / Instructions



Pilt 1 / Pic. 1

- EST
- Paigalda T-poldid nr. 5.
 - Paigalda kronstein nr. 2 (pilt 1).
 - Paigaldada T-polt nr. 7 (pilt 2).



Pilt 2 / Pic. 2

- ENG
- Place T-bolts no. 5.
 - Place bracket no. 2 (pic. 1).
 - Place T-bolt no. 7 (pic. 2).



Pilt 3 / Pic. 3

- EST
- Paigalda kronstein nr. 3 (pilt 3).
 - Paigalda kronstein nr. 4 (pilt 4).
 - Kinnita astmelaud kronsteinide nr. 2,3 ja 4 külge.
 - Reguleeri astmelaua asend ja pinguta kõik poldid.



Pilt 4 / Pic. 4

- ENG
- Place bracket no. 3 (pic. 3).
 - Place bracket no. 4 (pic. 4).
 - Attach the sideboard step to brackets no. 2,3 and 4.
 - Adjust the position of the sideboard step and tighten all bolts.