

CLASSIC TOP

FORD RANGER MK3-4

MAZDA BT-50 MK1

REVISION 1

TRUCKMAN FITTING INSTRUCTIONS



Auto Styling

TRUCKMAN

www.autostylinguk.com

Please read these instructions carefully. If you have any questions regarding the fitting of this item call 0845 6444704 or email fitting@autostylinguk.com.

Failure to comply with these instructions may affect any warranty considerations

Kit Contents



Truckman Classic High Roof Hardtop



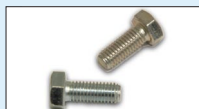
M8 Nylock Nuts

Double Cab	x 4
Extra Cab	x 6
Single Cab	x 6



Large M8 Washers

Double Cab	x 4
Extra Cab	x 6
Single Cab	x 6



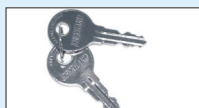
M8 Short Bolts

Double Cab	-
Extra Cab	x 2
Single Cab	-



Small M8 Washer

Double Cab	-
Extra Cab	x 2
Single Cab	-



Rear Door Keys

Double Cab	x 2
Extra Cab	x 2
Single Cab	x 2



M8 Long Bolts

Double Cab	x 4
Extra Cab	x 6
Single Cab	x 6



Fixing Plates

Double Cab	x 4
Extra Cab	x 6
Single Cab	x 6



M8 Spring Washers

Double Cab	x 4
Extra Cab	x 8
Single Cab	x 6



Bulkhead Bracket

Double Cab	-
Extra Cab	x 1
Single Cab	-



Self-Tapping Screws

Double Cab	-
Extra Cab	x 6
Single Cab	-



Warranty Card

Double Cab	x 1
Extra Cab	x 1
Single Cab	x 1

Tools Required

13mm Spanner
13mm Socket

Drill
Drill Bits (8mm, 3mm)

TRUCKMAN

Hardtop Preparation

1 Gel Coat Top

Remove the shrink wrap packaging, retrieving the fitting kit before disposal.



Coloured Top

Carefully remove the cardboard packaging. Remove the fitting kit from the pallet.



- 2 Remove the bolts, washers, fixing plates and nuts from the kit. Separate if joined.

- 3 Thoroughly clean the pickup's rear window and the hardtop's bulkhead window.



! Although, Auto Styling Truckman recommends replacing with or converting to an underrail bedliner (see website below), Truckman tops will fit with **overrail bedliners**. However, they require the bedliner's front lip to be removed and holes to be made for the clamps. See below for instructions.



NEED ADVICE?

Call our experts on 0845 6444704 or email fitting@autostylinguk.com

Overrail Bedliners



Remove the bedliner and cut the front lip off with a hand held jigsaw. Double & Single Cab Only.

Drill 57mm Ø holes, 55-60mm down on both sides of the bedliner measured to the dimensions on page 6. Clean up all edges and replace the top.

! For instructions on how to convert an overrail bedliner to an underrail bedliner visit our website at: www.autostylinguk.com/info/fitting-instructions/

Provides additional ventilation for the goods in your loadbed, suitable for the Classic.
Can be purchased and fitted to the Classic after the original sale.

Rotating Roof Vent

Vehicle Preparation



NEED ADVICE?

Call our experts on 0845 6444704
or email fitting@autostylinguk.com



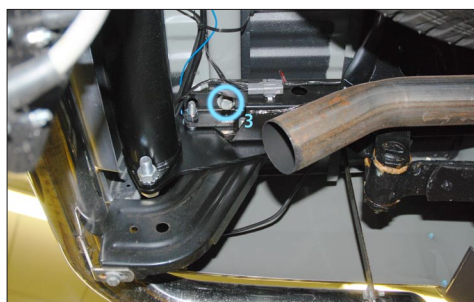
Double Cab & Single Cab Only

For Single Cab, there may be more bolts securing the bed than listed. Adjust as necessary.



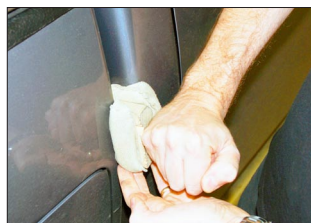
Measure the gap between the bed and the cab using a pair of callipers (as shown). If the gap is less than 25mm then follow the instructions below.

- 1 There are three bolts on each side as indicated in the pictures. To loosen the bolts with the 17mm socket.



NOTE: Do not remove the bolts completely. Just loosen them enough to be able to move the bed.

- 2 Insert wedges wrapped in foam into the gap (between the bed and the cab) on both sides. Gently hit them to widen the gap to at least 25mm. Tighten bolts and remove wedges.





Extra-Cab Bed Preparation



2 Loosely attach the Bulkhead Bracket with the short M8 Bolts.

3 Push it up against the loadbed and drill 3mm holes in the bed through the pre-drilled holes in the bracket



4 Remove the bracket and replace the bedliner. Drill 2 x 3mm holes near the top the bedliner, spread equally along it's width, through the liner and the bed. Screw the bedliner in place with the self-tapping screws.



3 If it is not possible to achieve the 25mm gap, please contact us here at Auto Styling for some "Loadbed Spacers" to slightly raise the bed at the front. Their position is indicated in the picture. For this step, you will need to lift the bed using a pry bar. Repeat step 2.



EXTRA CAB ONLY

The next 4 steps are NOT for the Double or Single Cab

1 Remove the bedliner and remove the area shown by the blue arrows to ensure all around clearance for the bulkhead bracket. Ensure the area marked AA is left intact.

Provides additional ventilation for the goods in your loadbed, suitable for the Classic.

Can be purchased and fitted to the Classic after the original sale.

Pop-Up Roof Vent



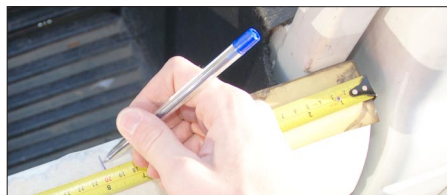
Fitting

1 DOUBLE CAB OR SINGLE CAB

From the outside of the loadbed's headboard rail, measure towards the back and mark with a pencil on both side rails as follows:

Double Cab: 200mm, 1400mm

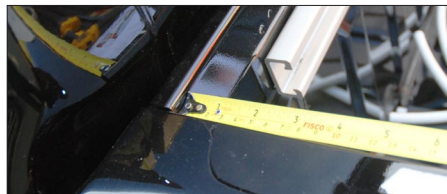
Single Cab: 200mm, 1150mm, 2100mm



EXTRA CAB

From the inside of the loadbed's headboard rail, measure towards the back and mark with a pencil on both side rails as follows:

Extra Cab: 225mm, 830mm, 1490mm



- 2 Drill a 3mm pilot hole in the centre of the rail at each mark. Drill again with an 8mm drill bit.



- 3 Remove all swarf and paint the holes with a zinc rich primer to prevent corrosion.



- 4 Lift the top onto the bed (over the ladder-rack for the Ford Ranger). This is best achieved with one person at the rear door end and two people guiding the front of the top. Keep the rear end slightly raised until the hardtop is in position. Pull the hardtop back as far as possible.

NOTE: Do NOT force downwards as this may cause cracking.

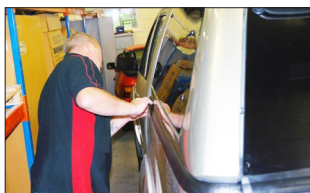


The **EXTRA CAB** has a recessed bulkhead panel. Only the front lip goes over the ladder rack.



HEAVY LIFTING

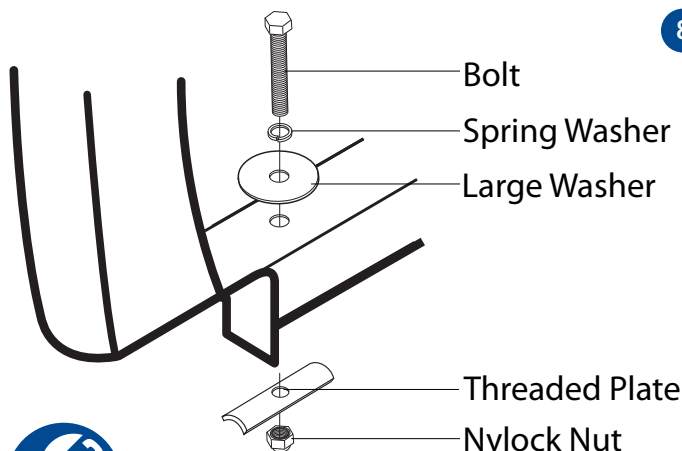
At least 2 people required for lifting.



- 5 Insert wedges between the top and the cab to hold the top back. Align the top centrally on the bed.

- 6 Measure and mark the same dimensions as before, onto the top.

- 7 Drill 3mm pilot holes to line up with the original holes. Complete with the 8mm drill bit.



- 8 Bolt the hardtop to the vehicle as shown in the diagram. Tighten to approx. 10Nm.

Remember to add the nylock nut *AFTER* initial bolting (also to 10Nm)

Extra Cab:

Replace the bulkhead bracket and secure with the short M8 bolts, spring washers and small flat washers. Secure centre with self-tapping screws.



NEED ADVICE?

Call our experts on 0845 6444704 or email fitting@autostylinguk.com

TRUCKMAN

THE ORIGINAL

Truckman Security Grille

A great step up for the protection of your goods from opportunist thieves, available for the Classic. Can be purchased and fitted to the Classic after the original sale.

IMPORTANT NOTES

Bedliners **must** be underrail for a good fit.
Ensure the tailgate and side windows (if applicable) are closed when driving.
Do not place animals in the load area without adequate ventilation.
Do not exceed the load limit on the roof rails (*See sticker on the hardtop*)

MAINTENANCE

Use a light oil to lubricate the lock and hinges.
Check the tightness of the fixing clamps / bolts.
(*Just more than hand tight / 10Nm Torque*)

CLEANING

Use ordinary non-ammonia based car cleaning products and a soft or microfibre cloth.

Auto Styling

TRUCKMAN

Auto Styling UK Limited,

Unit 4 Narrowboat Way,
Hurst Business Park,
Brierley Hill,
DY5 1UF, UK

Tel: 0845 6444704

Fax: 0845 64445014

Email: fitting@autostylinguk.com

www.autostylinguk.com

Notice

It is important that safety warnings in the instructions are adhered to.
Do not attempt to fit this product if you are not competent to do so.
Improper fitting may affect your warranty considerations. For your safety, we recommend that any wiring is performed by qualified Auto Electricians.

Due to tolerances of the vehicle fitting of this product may differ from the exact fitting specifications described in the instructions. It is the responsibility of the fitter that the product is installed correctly.

Fitting instruction revisions may be found at www.autostylinguk.com