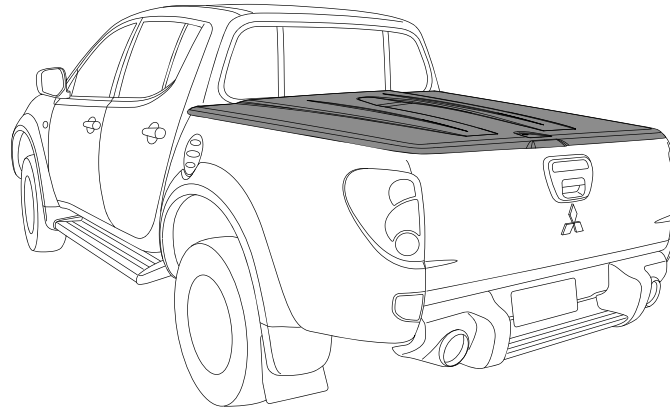


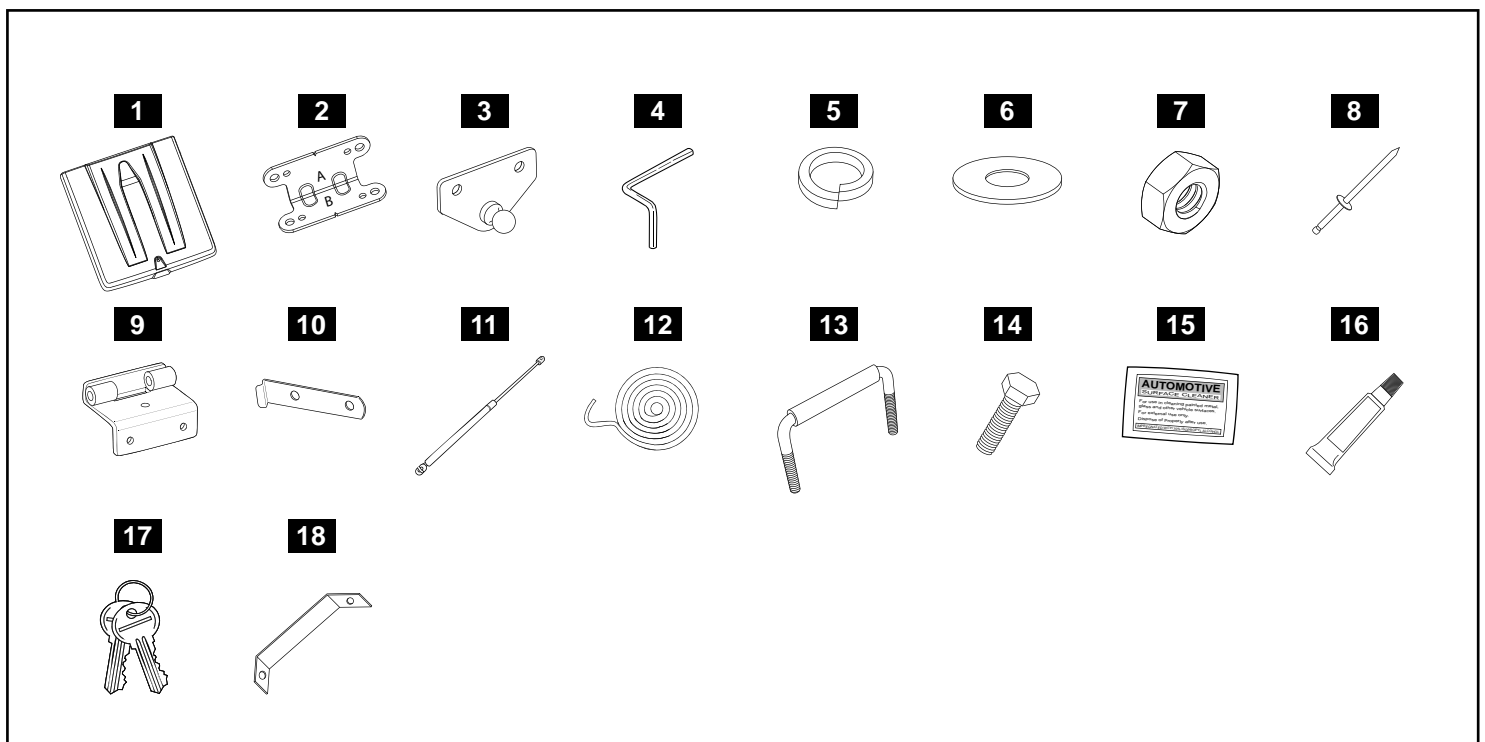
VEHICLE DESCRIPTION:

Mitsubishi L200


PLEASE KEEP INSTRUCTIONS IN GLOVE BOX FOR FURTHER USE

LIST OF PARTS

NO.	PART NAME	QTY	NO.	PART NAME	QTY	NO.	PART NAME	QTY
1	Tonneau Cover	1	8	Pop Rivet	12	14	M6x15mm Bolt	4
2	Lock Striker Bracket	2	9	Bottom Hinge	2	15	Alcohol Wipe	2
3	Gas Strut Bracket	2	10	Retainer Clip	2	16	Rust Inhibitor	1
4	Hinge Pins	2	11	Gas Strut	2	17	Keys	2
5	M6 Spring Washer	8	12	Extrusion Tape Roll	1	18	Lock Striker Support Bracket	2
6	M6 Flat Washer	16	13	U Bolt	2			
7	M6 Hex Nut	12						



WARNING!

When in the closed position, Tonneau Cover must be latched and tailgate must be closed! Failure to do so could result in unexpected opening of the Tonneau Cover from sudden wind gusts, which could cause damage to the vehicle and/or your Tonneau Cover!

Warranty Terms

EGR warrants that the ABS truck Tonneau Cover EGR will be free from defects in material and workmanship for a period of three (3) years from the retail date of purchase. The gas struts are warranted for one (1) year from the retail date of purchase. This warranty only applies to the original purchaser and is nontransferable. Warranty must be claimed with original sales receipt for proof of purchase.

Exclusions

This warranty does not cover failure due to neglect, improper installation including any modifications to installation hardware, operating the vehicle with your EGR Tonneau Cover in the open position, alterations, addition of equipment, abuse, accident, corrosion, normal wear and tear, lack of maintenance, and exposure to chemicals that are not safe for plastics. Incidental or consequential damage or loss of contents due to use, neglect, lack of maintenance, misuse of EGR Tonneau Cover is sole responsibility of the truck owner and operator. Paint wear to the truck bed can happen with any truck Tonneau Cover and is the sole responsibility of the truck owner. Paint damage to your truck is not covered under this warranty.

Disclaimer

In the event that your EGR Tonneau Cover is found to be defective under the terms of this warranty, it is at the discretion of EGR to repair or replace the defective part. Transportation costs and labor are not associated with this warranty claim.

MAINTENANCE:

Your EGR Tonneau Cover only requires periodic cleaning with mild car wash soap. Only use cleaners, waxes, or products that are labelled safe for use on plastics. Avoid the use of any chemicals to clean your EGR Tonneau Cover unless labelled safe for plastics. Avoid use of abrasive type cleansers as they may dull the finish.

The gas struts are self lubricating and should only be cleaned occasionally with a damp cloth. Premature seal failure will result if solvents or lubricants are used to clean struts.

The locking mechanisms & Latches only require occasional lubrication with Graphite Powder. DO NOT use any other lubricants or oils. Using alternative products will VOID Warranty.

All installation hardware and fasteners must be checked every so often for tightness.

TONNEAU COVER - IMPORTANT:

- Read instructions carefully before installation. It is strongly recommended that installation is conducted by an authorized dealer.
- Do not stand/sit or rest heavy objects on Tonneau Cover.
- Humans or animals are not to be under the closed Tonneau Cover at any time.
- Securely latch Tonneau Cover before operating vehicle.
- Do not carry open volatile chemicals with Tonneau Cover installed.
- If contact with volatile chemicals occurs clean Tonneau Cover with mild detergent and water solution.
- This product must be installed exactly as specified in these instructions. Failure to do so may result in improper fit and/or retention.
- Recommend installation by 2 people.
- Approximate fitting time is 1 ½ hours.

PAINTING INSTRUCTIONS: (IF UNPAINTED)

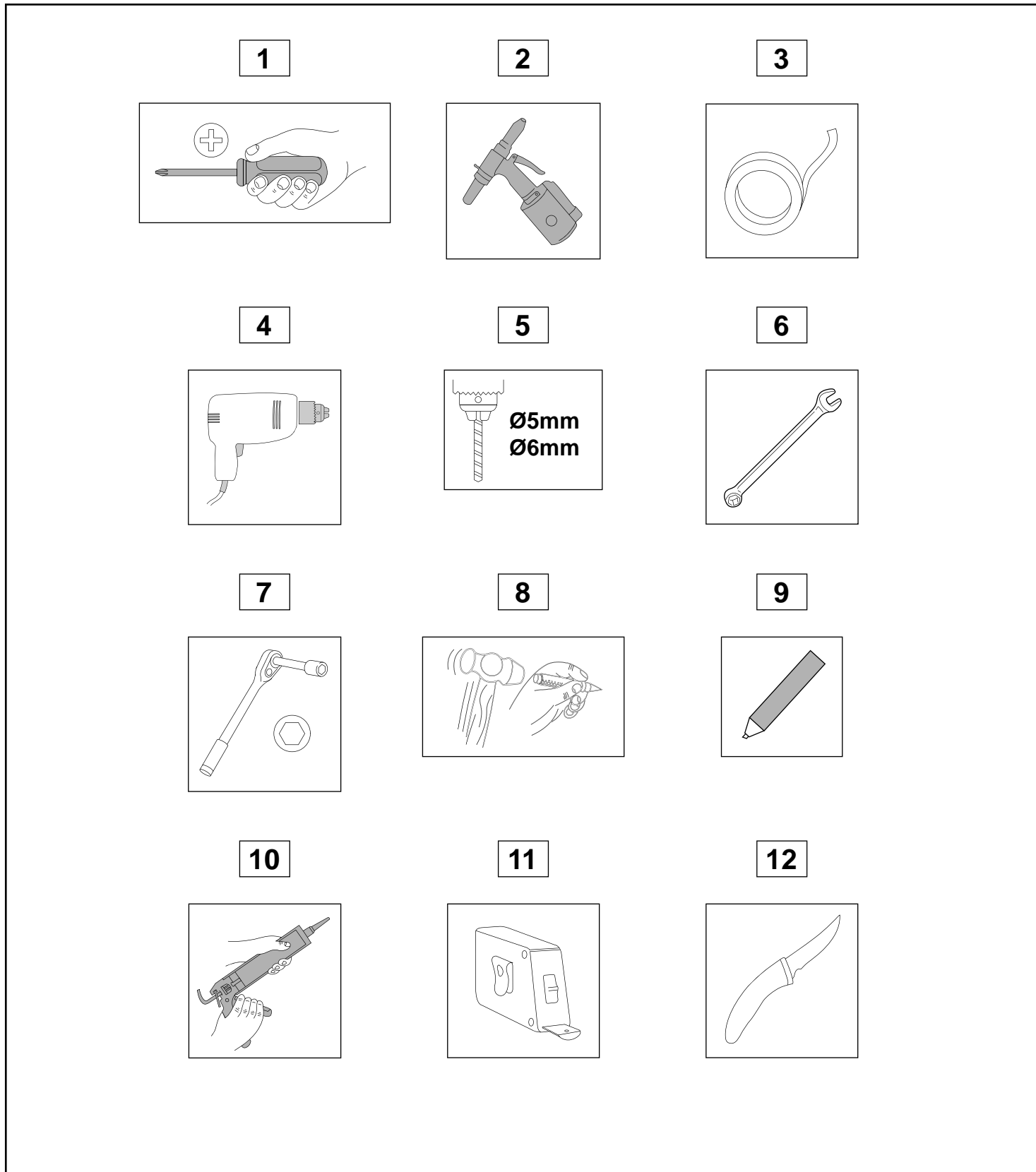
- Prior to painting, clean all surfaces to be painted using clean water and a mild detergent, do not use lacquer thinner or any solvent based products. Wipe completely dry.
- Best results will be achieved by wiping the areas to be painted with a tack rag just prior to painting.
- Select a top coat and clear paint that is suitable for ABS (Acrylonitrile-Butadiene-Styrene).
- Automotive paint systems, such as Acrylics or Two Packs, can be applied directly to the components. However, some paints may require a primer. If recommendations on paint specification are not followed, cracking of the part or degradation to the material may result. In all paint systems, aromatic hydrocarbons and alkalies are best avoided to reduce damage to the material properties.
- If using a paint system which requires baking, do not expose the product to temperatures above 70° C (155° F).
- Allow a minimum of 8 hours after baking before installation on the vehicle.

RECOMMENDED TOOLS LIST

NO.	TOOL NAME
1	Phillips Head Screwdriver
2	Rivet Gun
3	Masking Tape
4	Drill

NO.	TOOL NAME
5	Ø5mm & Ø6mm Drill Bit
6	Spanners
7	Sockets
8	Hammer & Centre Punch

NO.	TOOL NAME
9	Pencil
10	Caulking Gun & Silicon
11	Tape Measure
12	Knife



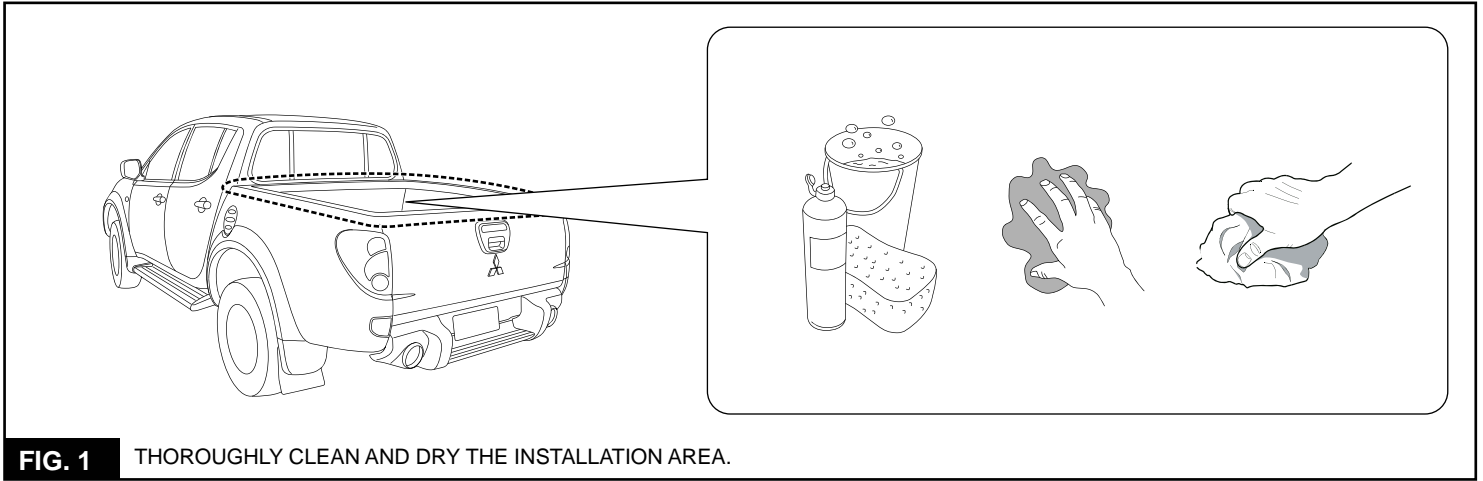


FIG. 1 THOROUGHLY CLEAN AND DRY THE INSTALLATION AREA.

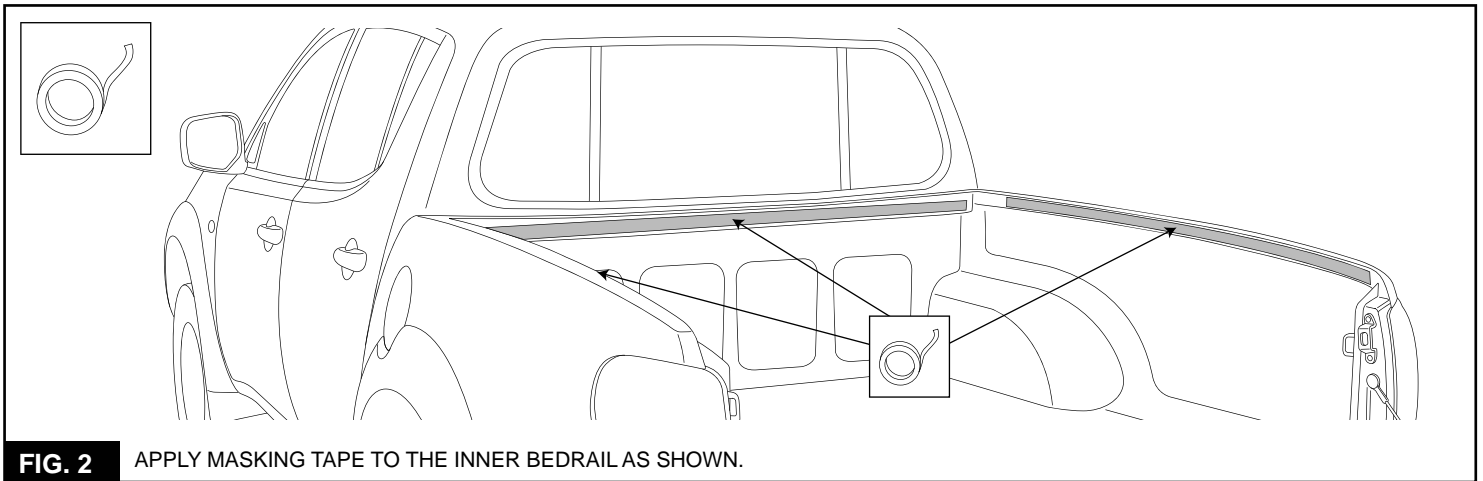


FIG. 2 APPLY MASKING TAPE TO THE INNER BEDRAIL AS SHOWN.

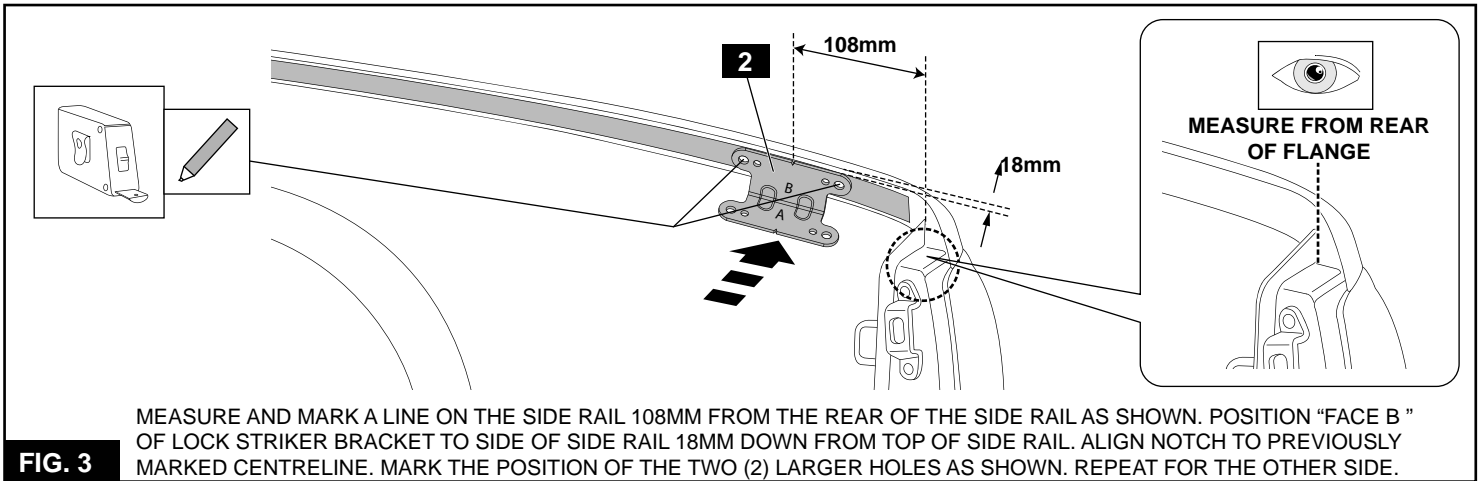


FIG. 3 MEASURE AND MARK A LINE ON THE SIDE RAIL 108MM FROM THE REAR OF THE SIDE RAIL AS SHOWN. POSITION "FACE B" OF LOCK STRIKER BRACKET TO SIDE OF SIDE RAIL 18MM DOWN FROM TOP OF SIDE RAIL. ALIGN NOTCH TO PREVIOUSLY MARKED CENTRELINE. MARK THE POSITION OF THE TWO (2) LARGER HOLES AS SHOWN. REPEAT FOR THE OTHER SIDE.

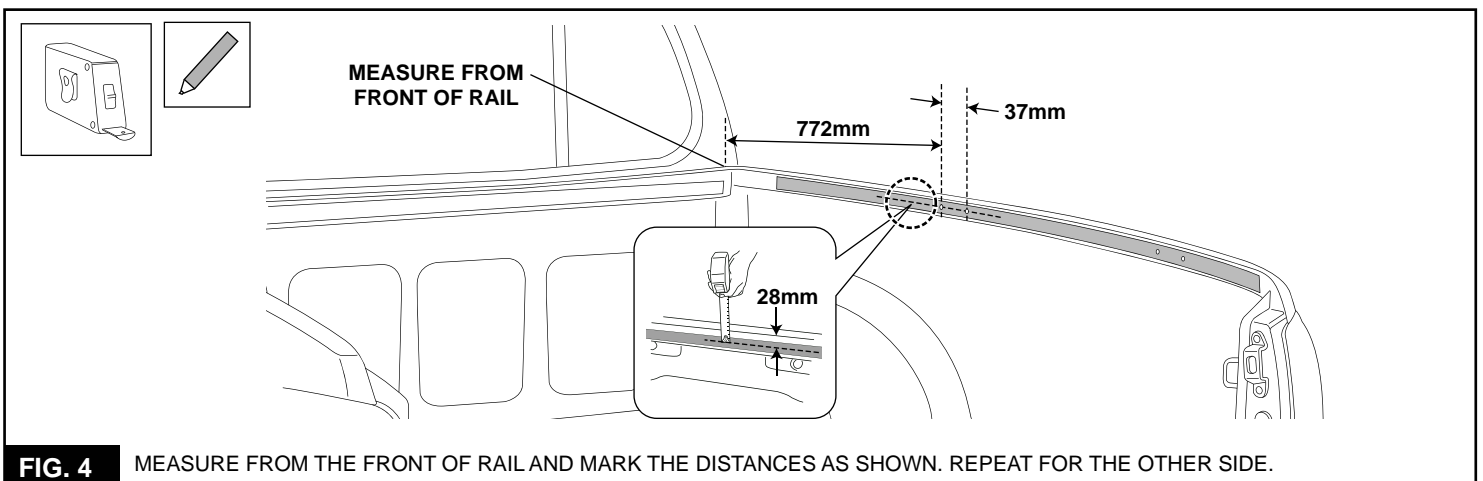
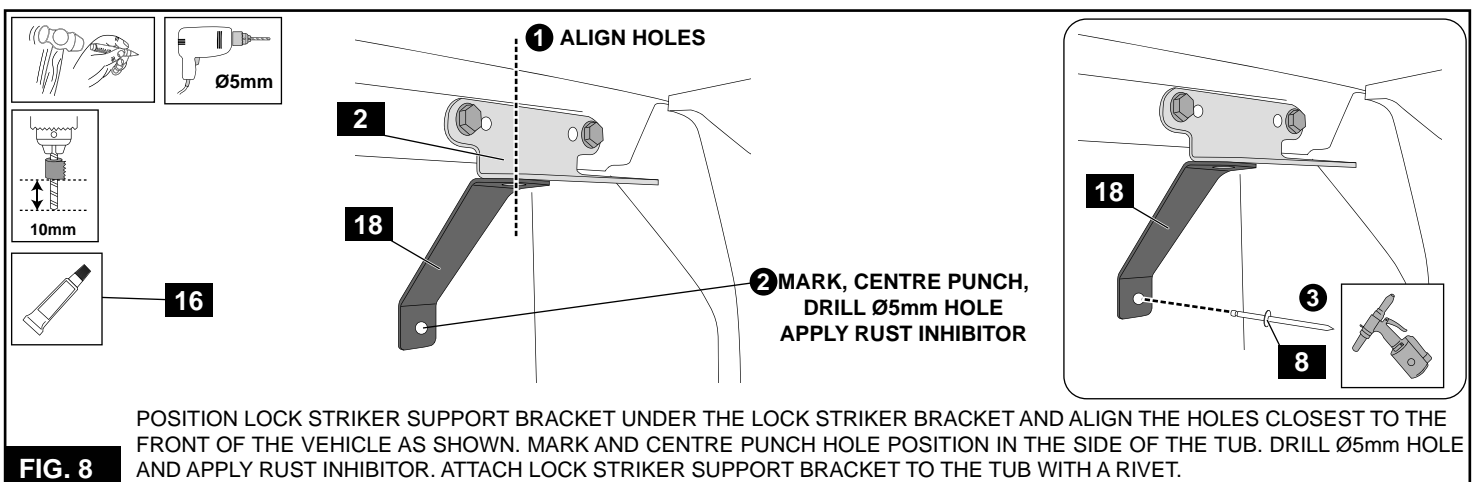
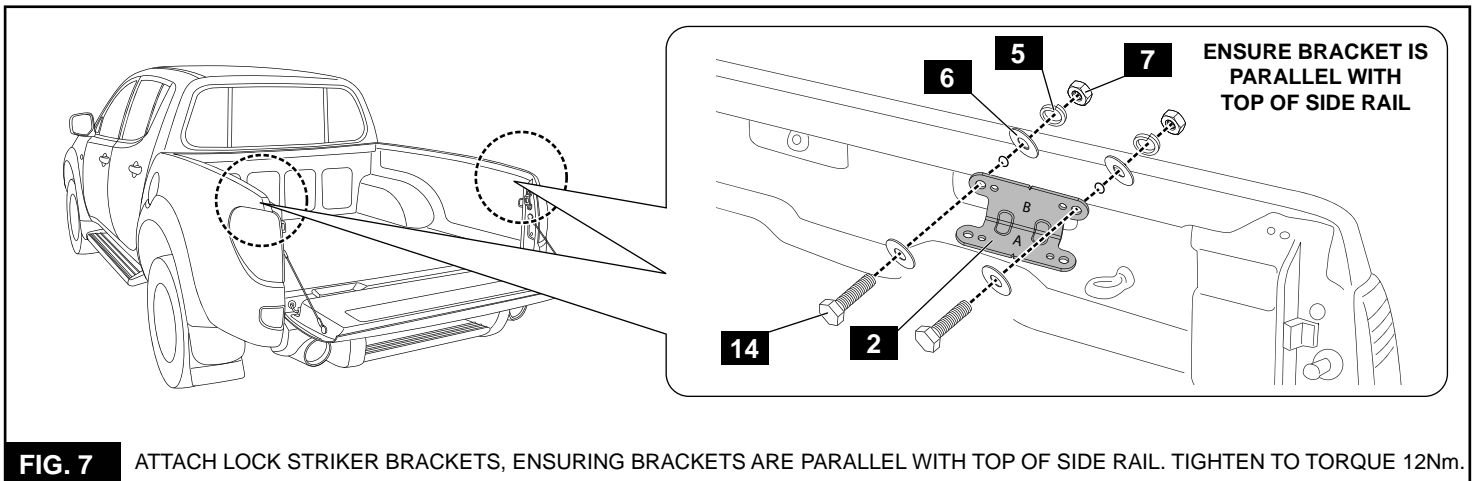
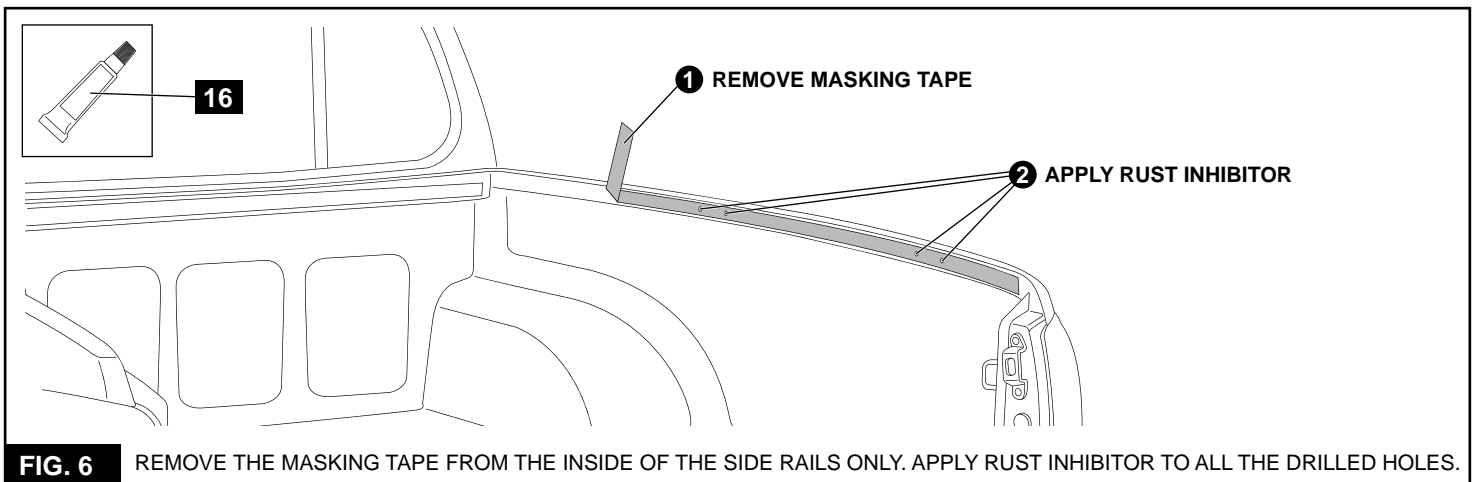
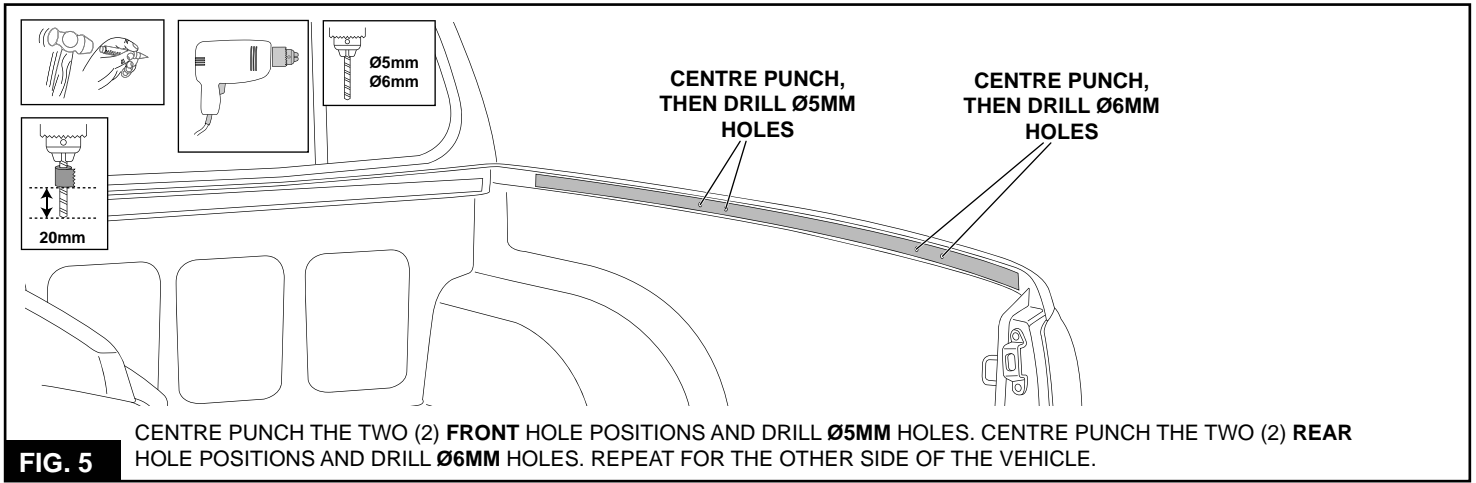
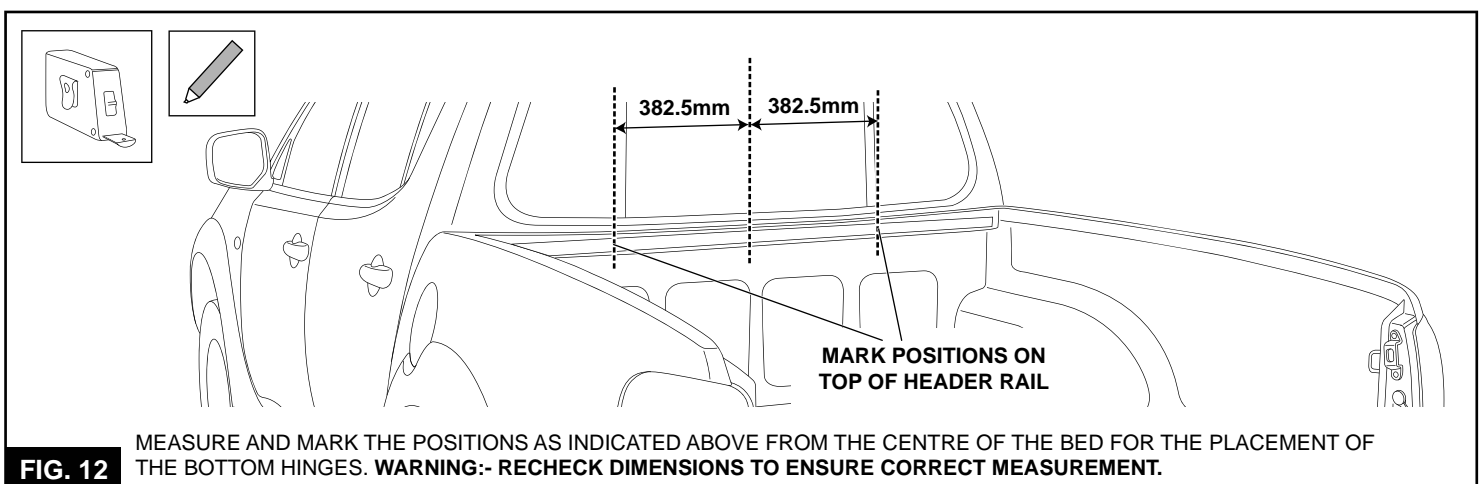
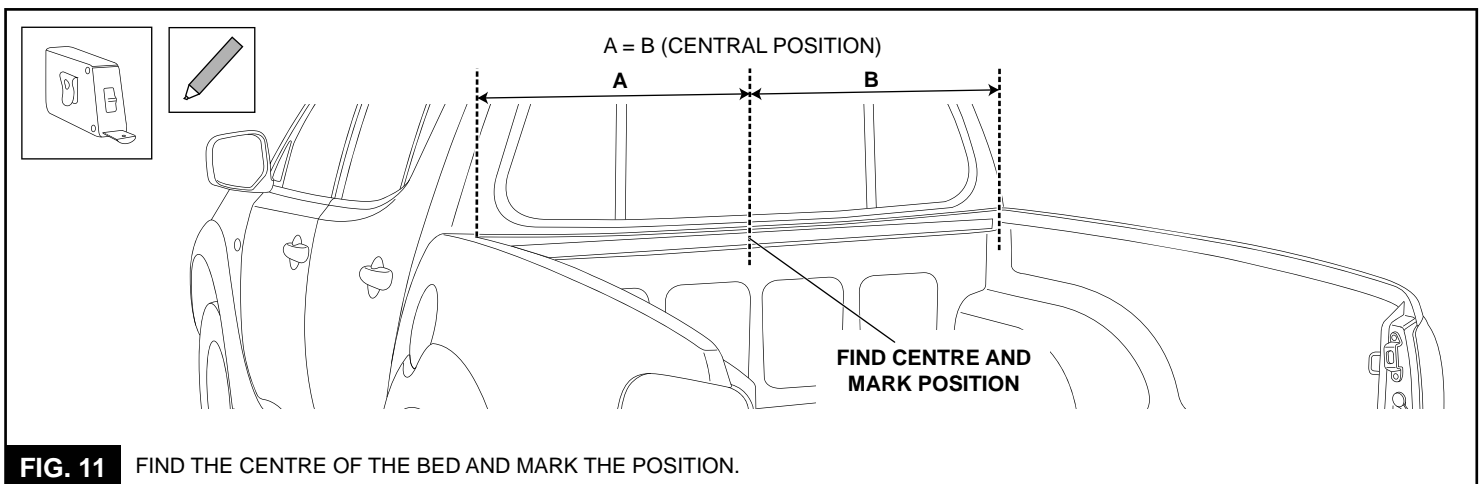
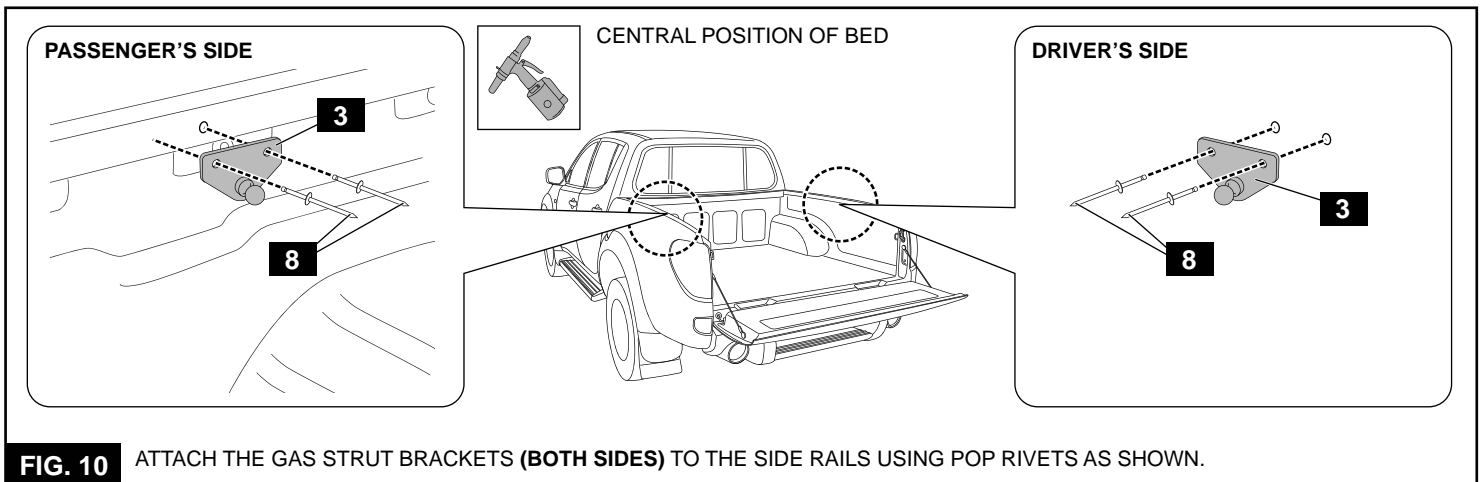
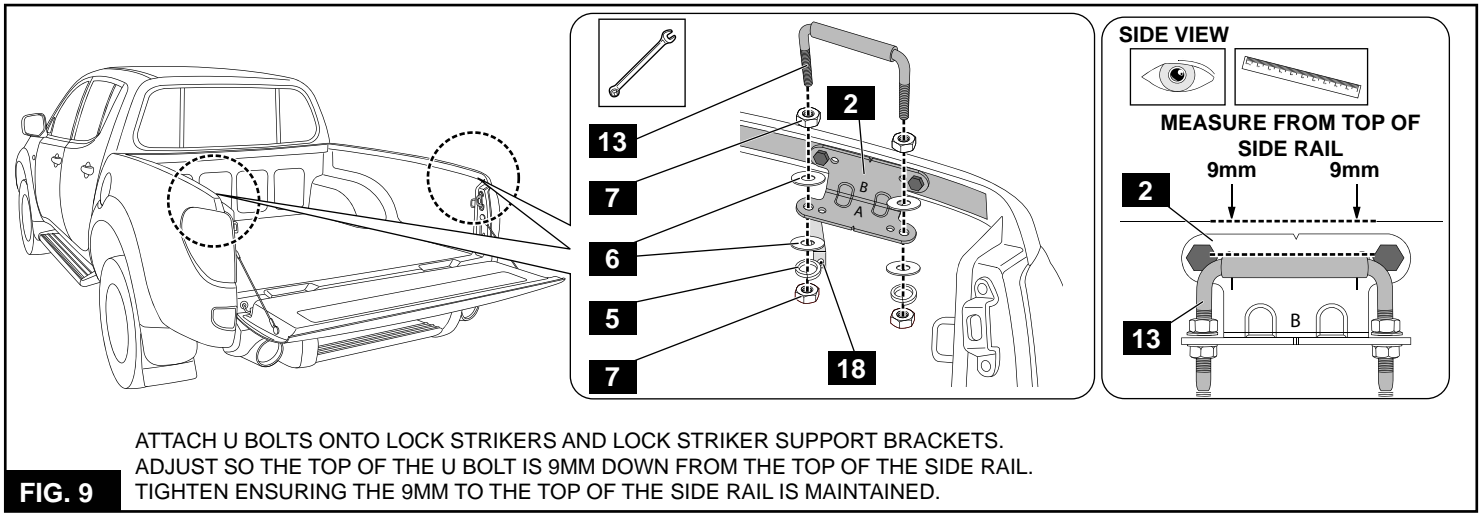
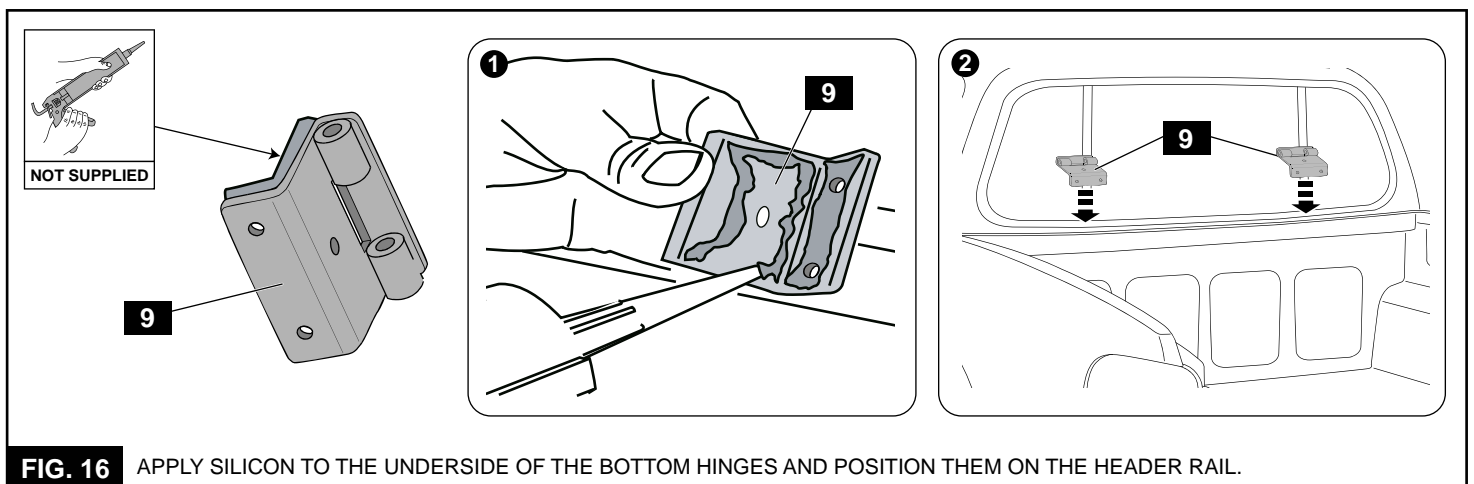
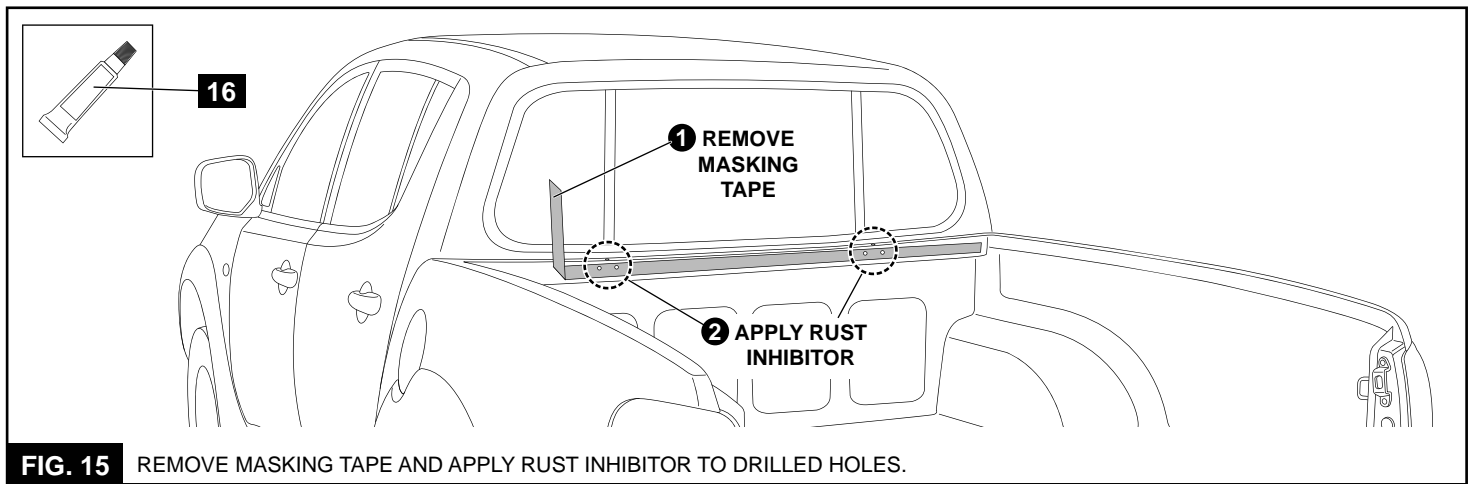
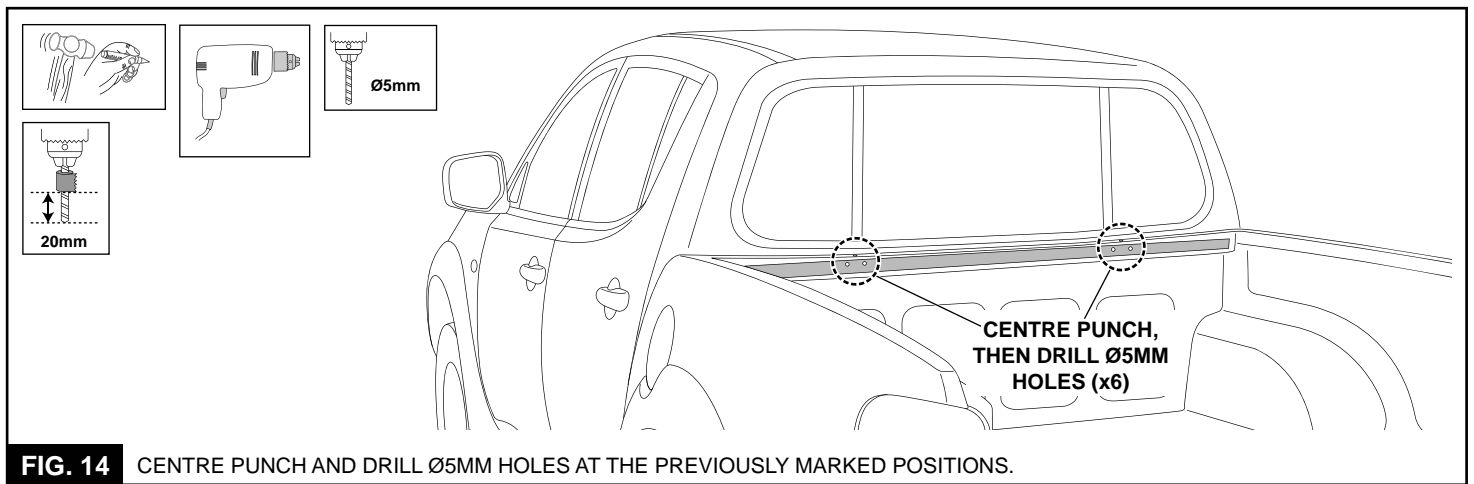
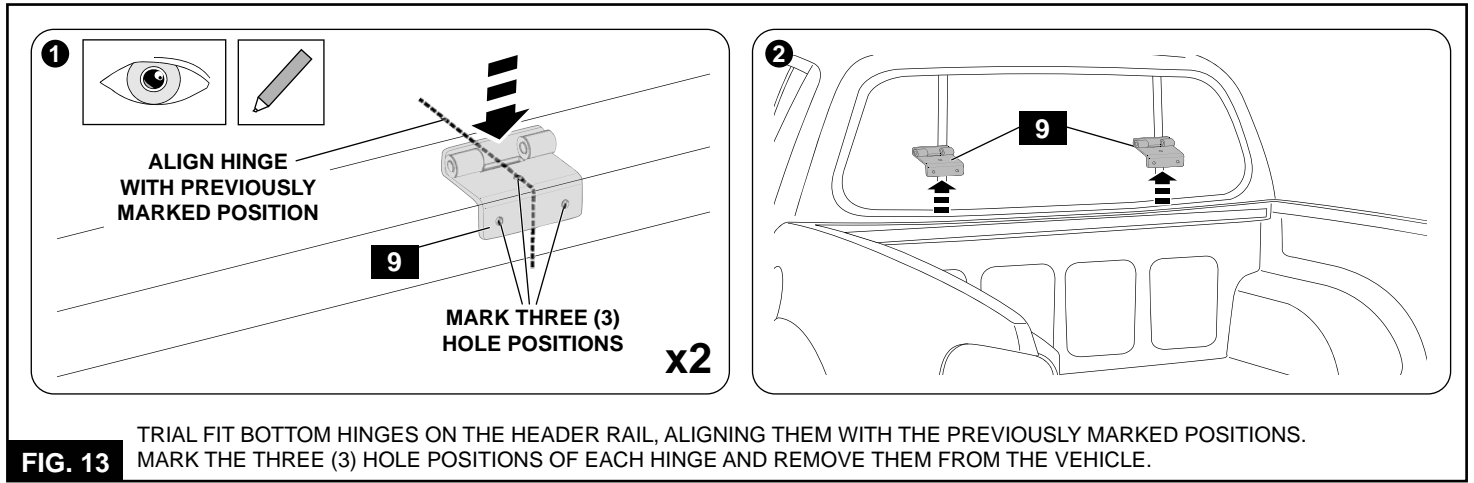
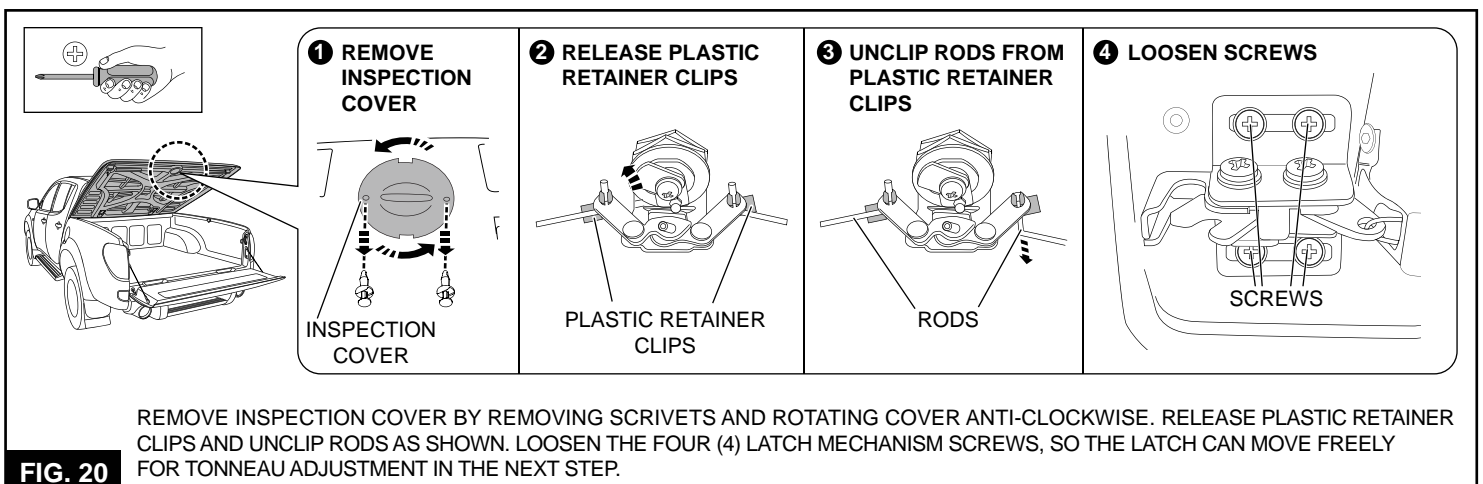
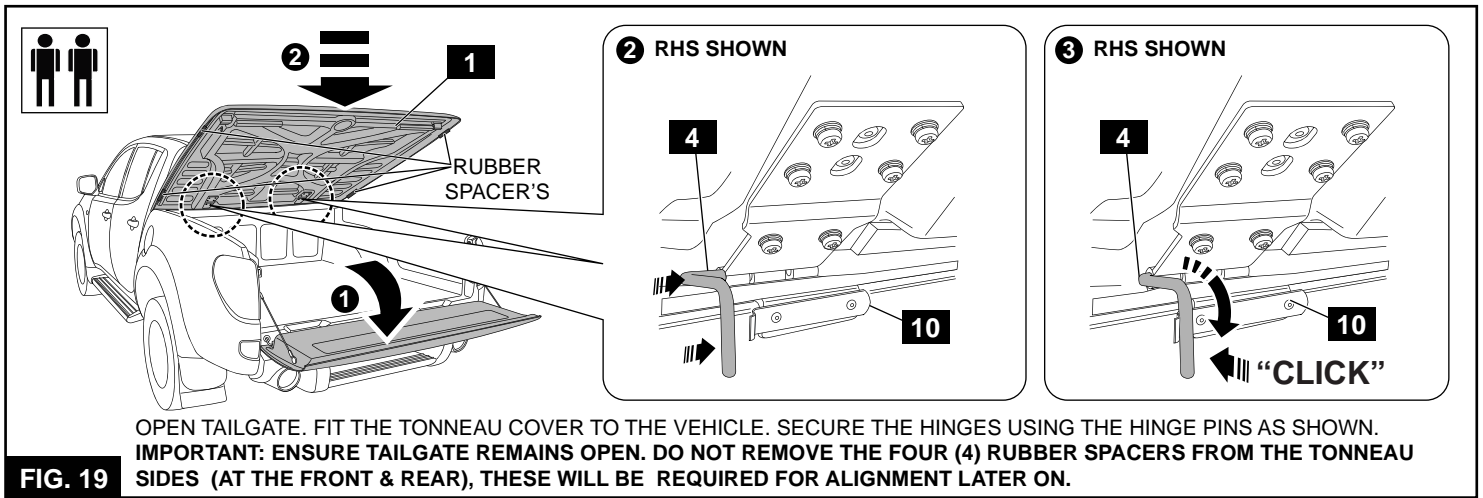
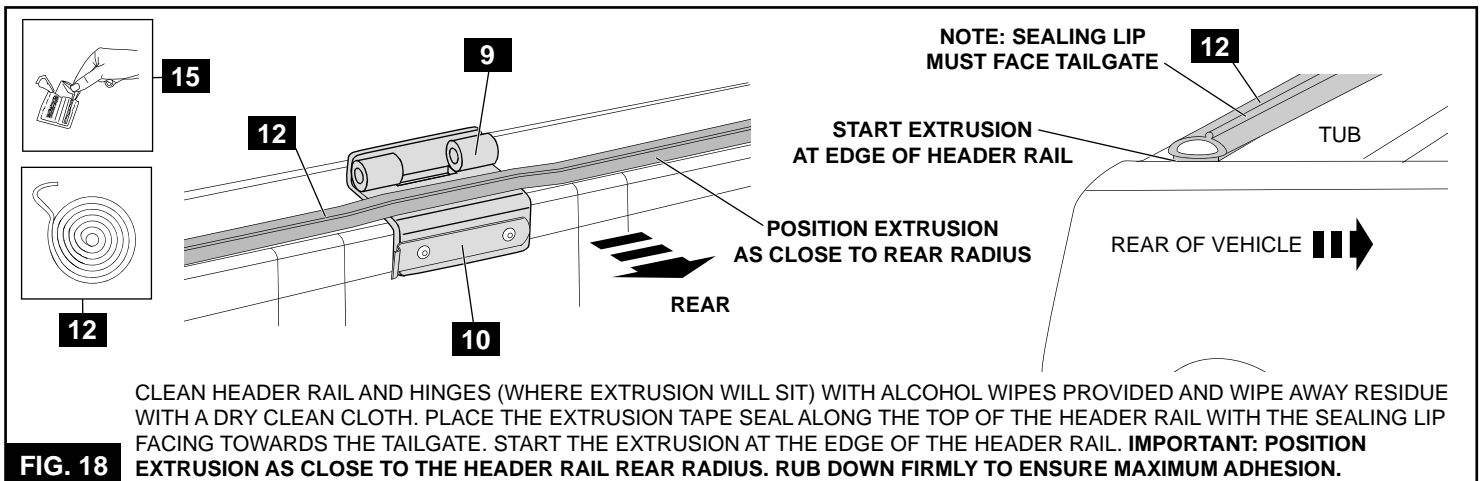
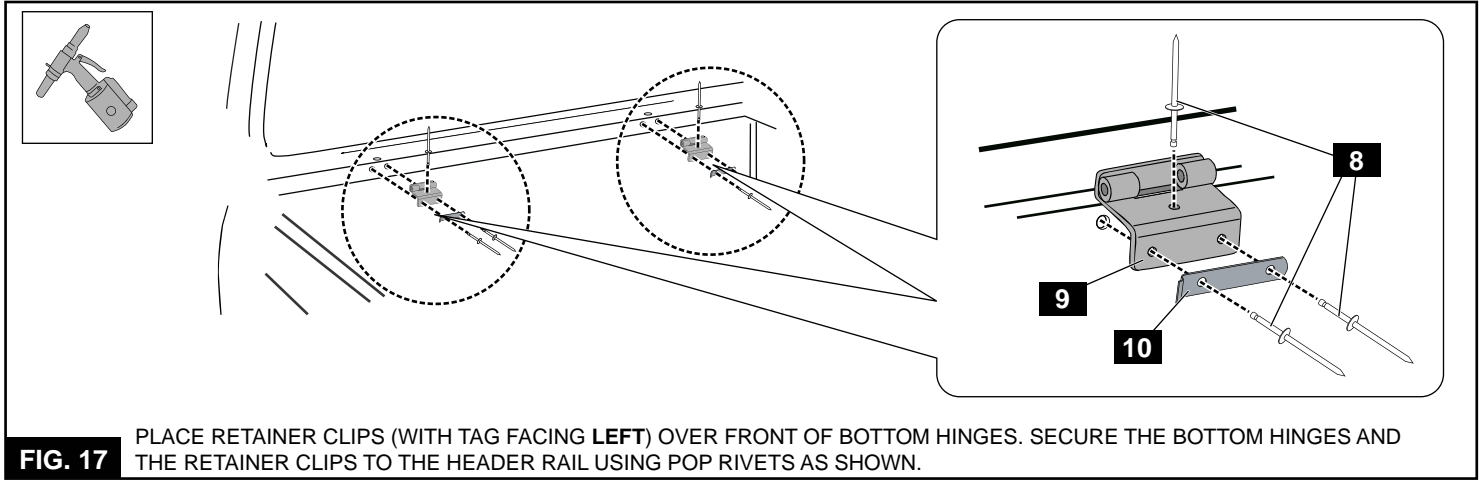


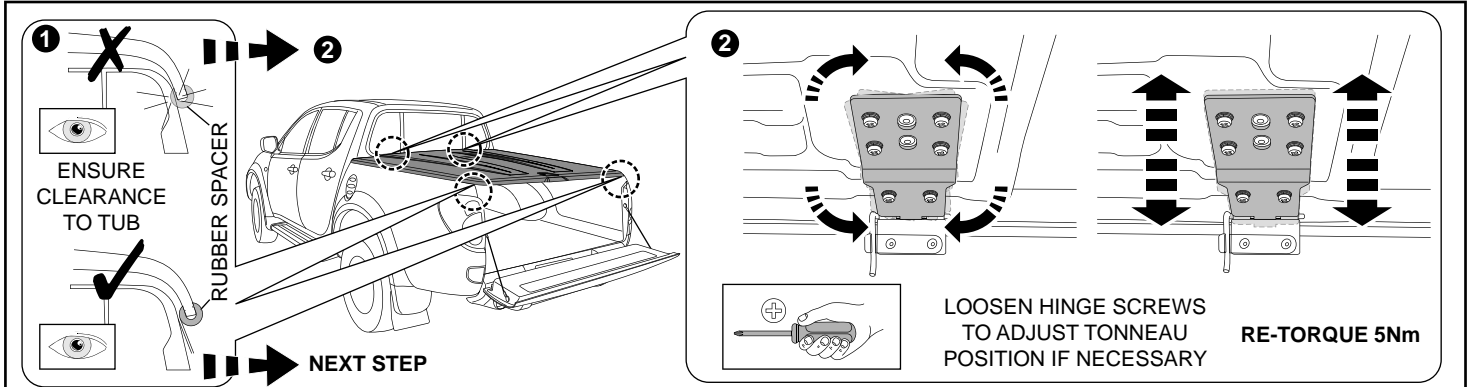
FIG. 4 MEASURE FROM THE FRONT OF RAIL AND MARK THE DISTANCES AS SHOWN. REPEAT FOR THE OTHER SIDE.











IMPORTANT: THE TONNEAU COMES FITTED WITH FOUR (4) RUBBER SPACERS TO ASSIST IN ALIGNMENT TO THE TUB. CLOSE TONNEAU COVER AND CHECK THAT IT IS CENTRAL ON BED. LOOSEN HINGE SCREWS - DO NOT ADJUST HINGES WHILE GAS STRUTS ARE CONNECTED. CHECK LH & RH LATCHES ARE ENGAGED. MOVE TONNEAU TO ENSURE EVEN CLEARANCE LHS TO RHS BETWEEN TUB AND SPACERS. MOVE TONNEAU TO ENSURE FORE & AFT POSITION IS CORRECT BY ENSURING CLEARANCE AT REAR OF TUB SIDE. RE-TIGHTEN (12) HINGE SCREWS WHILE TONNEAU IS IN CORRECT POSITION TO TORQUE 5Nm. RE-TIGHTEN LATCHES WHILE TONNEAU IS IN CORRECT POSITION TO TORQUE 4Nm. IMPORTANT: ENSURE TAILGATE REMAINS OPEN AND SPACERS ARE REMOVED AFTER ALIGNMENT IS COMPLETE.

FIG. 21

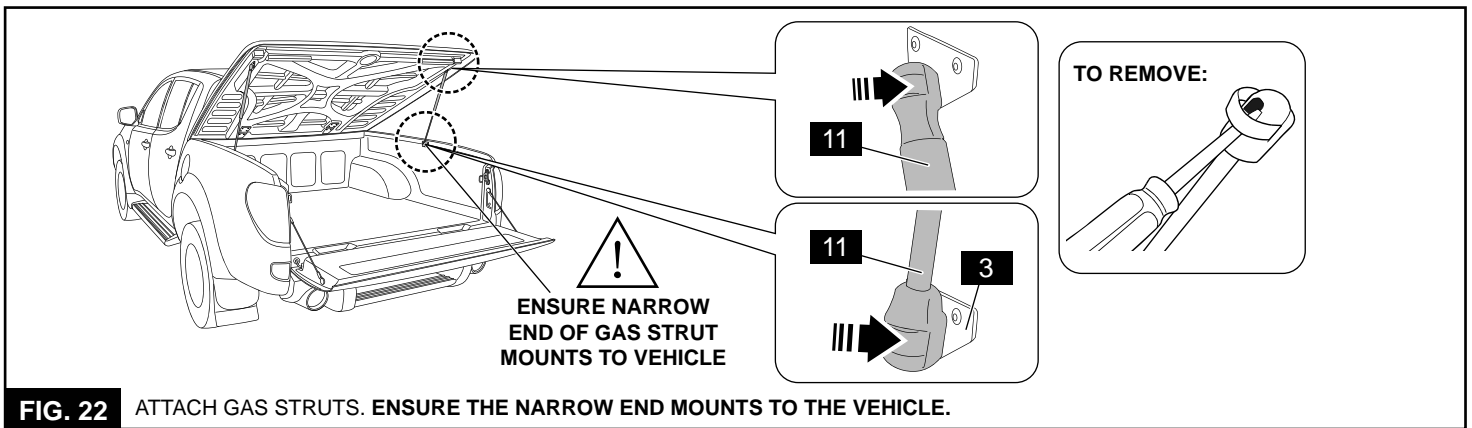
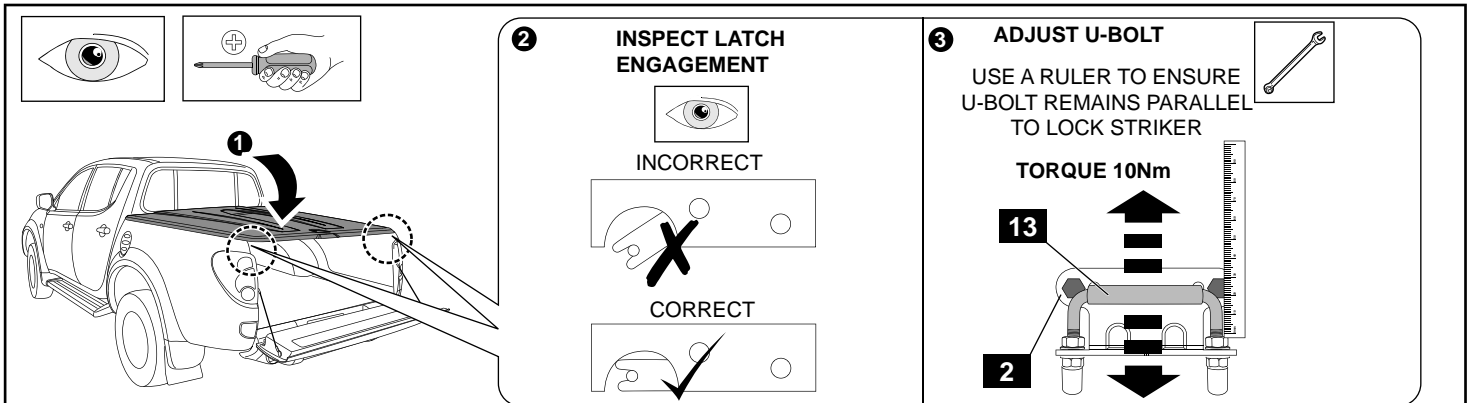


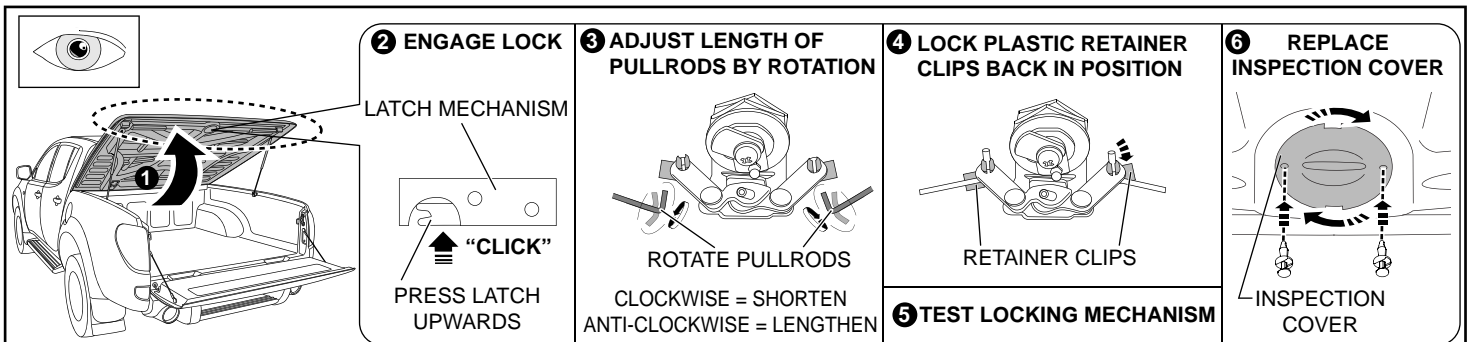
FIG. 22

ATTACH GAS STRUTS. ENSURE THE NARROW END MOUNTS TO THE VEHICLE.



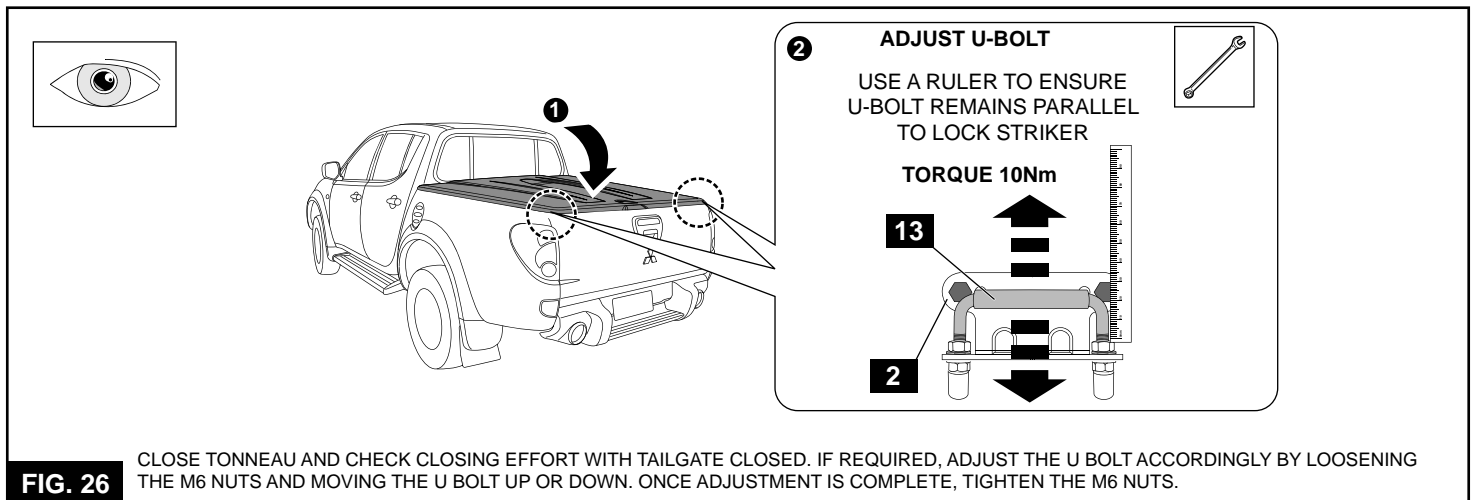
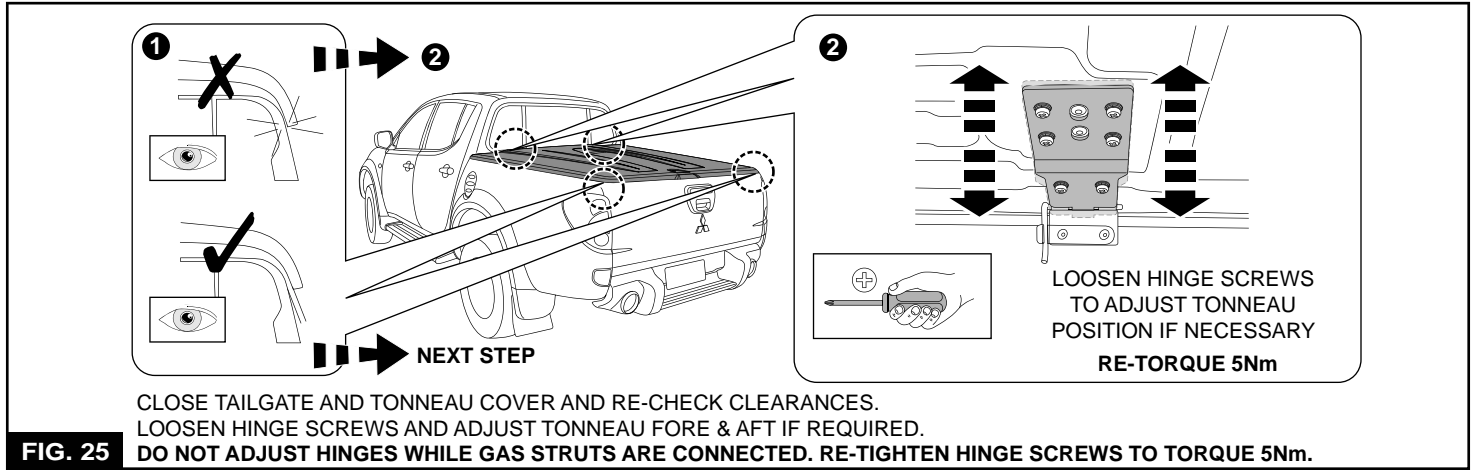
CLOSE TONNEAU AND INSPECT LOCKING MECHANISM. ENSURE LATCH HITS THE U BOLT CENTRALLY. IF IT DOES NOT, ADJUST THE U BOLT ACCORDINGLY BY LOOSENING THE M6 NUTS AND MOVING THE U BOLT UP OR DOWN AS SHOWN. ONCE ADJUSTMENT IS COMPLETE, TIGHTEN THE M6 NUTS. **IMPORTANT: TONNEAU HAS 2 STAGE LOCKS. ENSURE TONNEAU ENGAGES WITH SECOND STAGE OF THE LATCH.**

FIG. 23

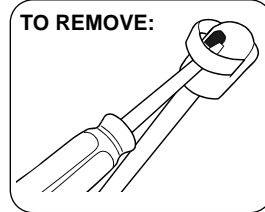
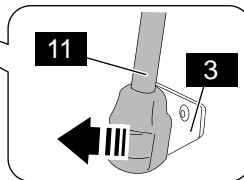
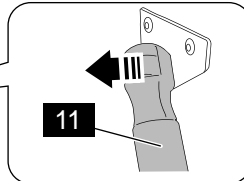
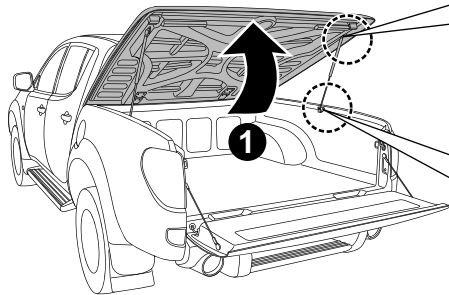
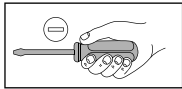
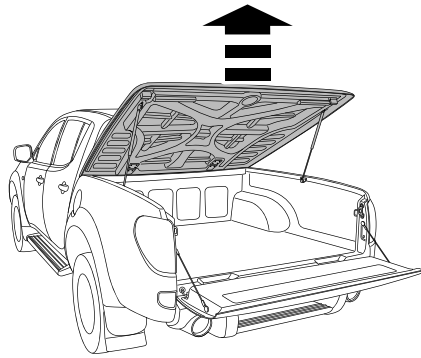


OPEN TONNEAU AND ENGAGE LOCK BY PRESSING UPWARDS ON LATCH. ADJUST PULLRODS TO FIT INTO RETAINER CLIPS BY ROTATING THEM CLOCKWISE TO SHORTEN OR ANTI-CLOCKWISE TO LENGTHEN. CLIP PULLRODS AND RETAINER CLIPS BACK INTO POSITION. TEST LOCK BY PRESSING THE BUTTON ON TOP OF TONNEAU COVER. IF LATCH MECHANISM DOES NOT RELEASE, RETURN TO STEP 3 AND SHORTEN THE PULLRODS. FINALLY, RE-CONFIRM THE OPEN-CLOSE-OPEN OPERATION OF TONNEAU WITH THE TAILGATE CLOSED. MAKE FURTHER ADJUSTMENTS IF NECESSARY BY RETURNING TO FIGURE 21, 24 AND 25. FINALLY REPLACE INSPECTION COVER.

FIG. 24



REMOVAL OF TONNEAU COVER



OPEN TONNEAU COVER AND DETACH GAS STRUTS BY INSERTING A SMALL SCREW DRIVER AND ADJUSTING THE SPRING CLIP ON THE STRUT AS SHOWN. NOTE: DO NOT REMOVE THE SPRING CLIP. ONLY A SMALL AMOUNT OF LEVERING IS REQUIRED TO DETACH.

FIG. 1

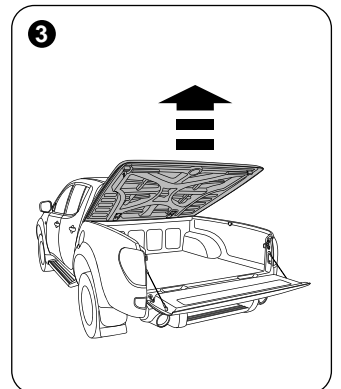
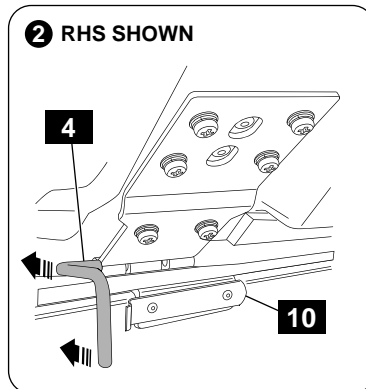
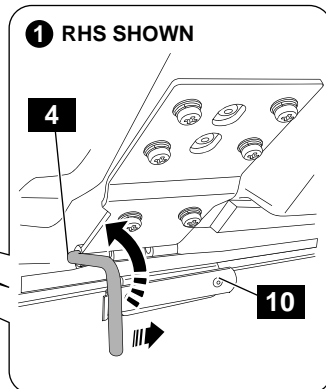
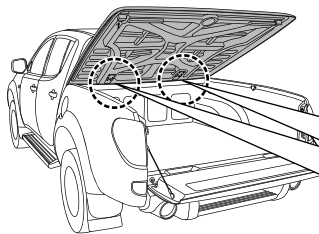


FIG. 2 REMOVE HINGE PINS AND REMOVE THE TONNEAU COVER AS SHOWN.

TO REPLACE THE TONNEAU COVER:
Reverse the sequence and the procedures of the two (2) Figures above.

MITSUBISHI L200

1PIECE HARD TONNEAU COVER

KEY IDENTIFICATION CODE



--	--	--	--	--

Please write your key identification code in the boxes above and retain. Replacement keys can be purchased from your local Mitsubishi dealer.