

Desert Cruiser Hard Shell Roof Top Tent

INSTRUCTION MANUAL

Product description :

This semi-auto roof top tent could be set up easily by 2 persons, set up and fold down in seconds with patented gas strut assisted opening mechanism. Enjoy the outdoor life in whatever weather !

Material and specification :

- A. The whole frame uses aluminium alloy, parts of joints use strong nylon.
- B. Double layer silver coating treatment for outer tent material to offer better heat insulation and waterproof.
- C. With good quality mattress provides comfortable sleep experience.
- D. Telescopic aluminium alloy ladder is removable and could endure 150kg

1.2m:

Tent fully closed size: 213(L) X 136(W) X 19(H) cm

Fully open inner size: 205(L) X 120(W) X 103(H) cm

N.W.: 58KG(Not include the ladder) G.W.: 73KG

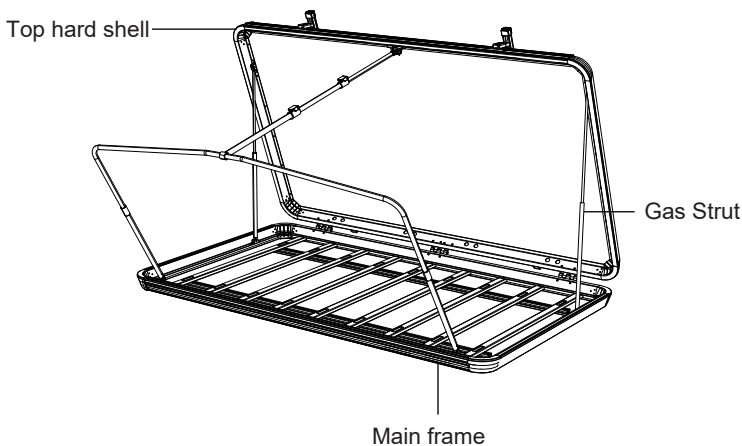
1.4m:

Tent fully closed size: 213(L) X 156(W) X 19(H) cm

Fully open inner size: 205(L) X 140(W) X 123(H) cm

N.W.: 65KG(Not include the ladder) G.W.: 80KG

Product frame :



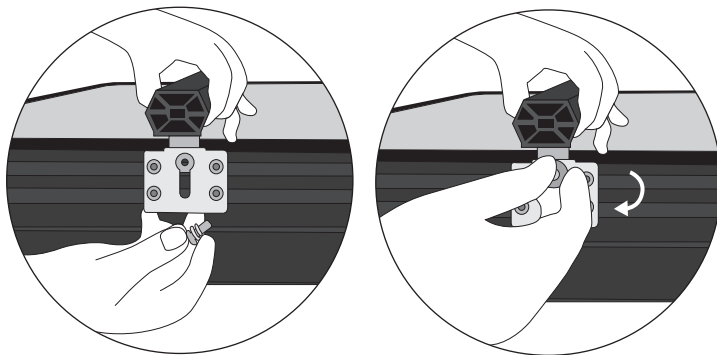
Installation:

Two detachable bars could be install horizontally or vertically on shell as you need. Please install the bars on roof tent before mounting tent on car top:

- ① Insert fixed parts of bar into slot of frame on both side.
- ② Adjust the height of bar then screw tightly with M8x15mm Hex Bolt, M8 Flat Washer and M8 Arc Washer.

M8 Arc Washer

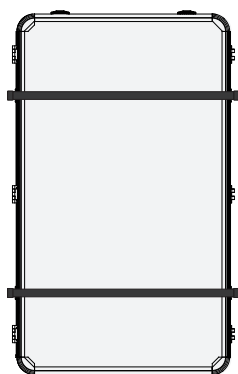
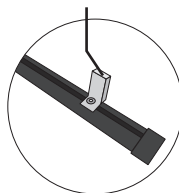
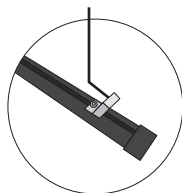
M8 Flat Washer



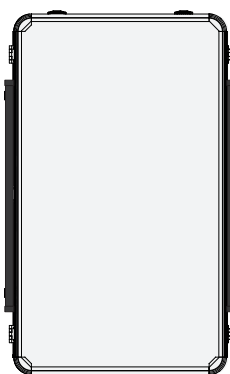
- ③ If install vertically, use Hex Wrench adjust the direction of fixed parts of bar as below, then follow step 1 and 2.

Horizontal direction

Vertical direction



Horizontal installation



Vertical installation

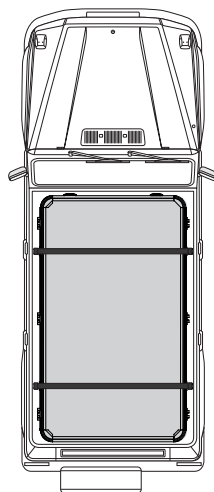
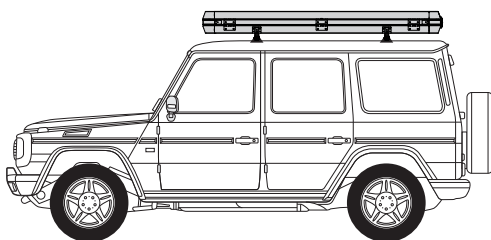


Note: Please make sure nothing loaded on the top shell when opening/closing the tent.

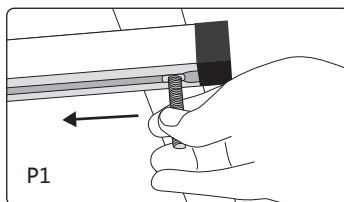
Installation:

1. Install your roof rack per the manufacturers instructions and in the load bearing position on the vehicle.

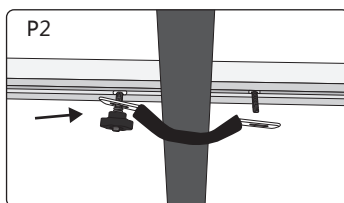
2. Lift up the tent onto the rack from car side. Adjust the tent to the roof center, ensuring the rear door can be opened/closed.



3. Slide the T Shape Bolts into the rails from two sides(as P1).

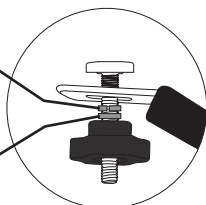


4. Slide T Shape Bolts into the middle hole of rail, with U-Shape Stator, M8 Arc Washer, M8 Flat Washer, and Plastic Nut lightly screwed in advance.(as P2)

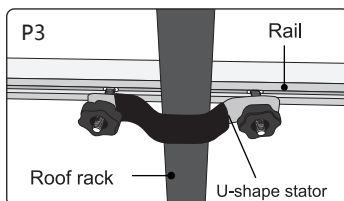


M8 Arc Washer

M8 Flat Washer



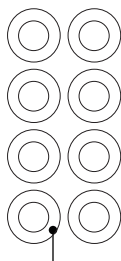
5. Screw the other side of U Shaped Stator with component in order as above, and ensure Stator tightened(as P3, same operation for rest).



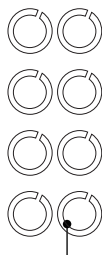
INCLUDED TOOLS:



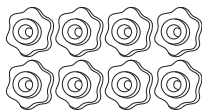
U Shape Stator(4pcs)



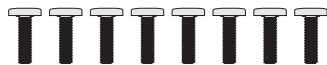
M8 Flat Washer(8pcs)



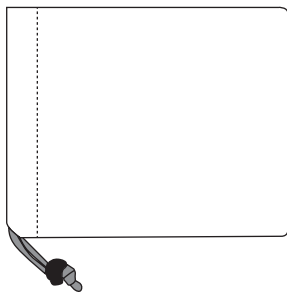
M8 Arc Washer(8pcs)



Plastic Nut(8pcs)



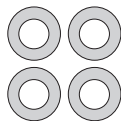
T shape bolts(8pcs)



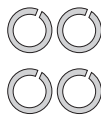
Tool Bag



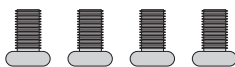
6mm Hex Key(1pc)



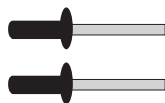
M8 Flat Washer
(4pcs)



M8 Arc Washer
(4pcs)



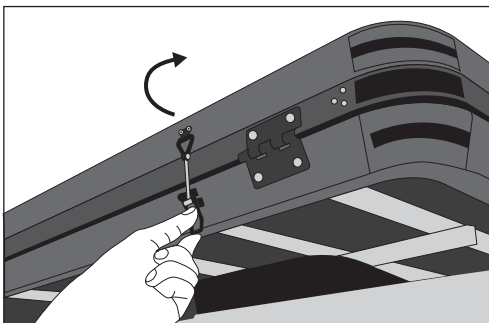
M8x15mm Hex Bolt
(4pcs)



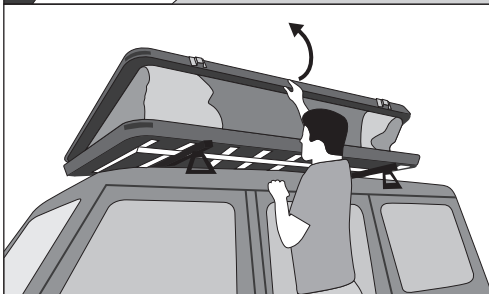
Aluminum Rivet(2pcs)

Setting up:

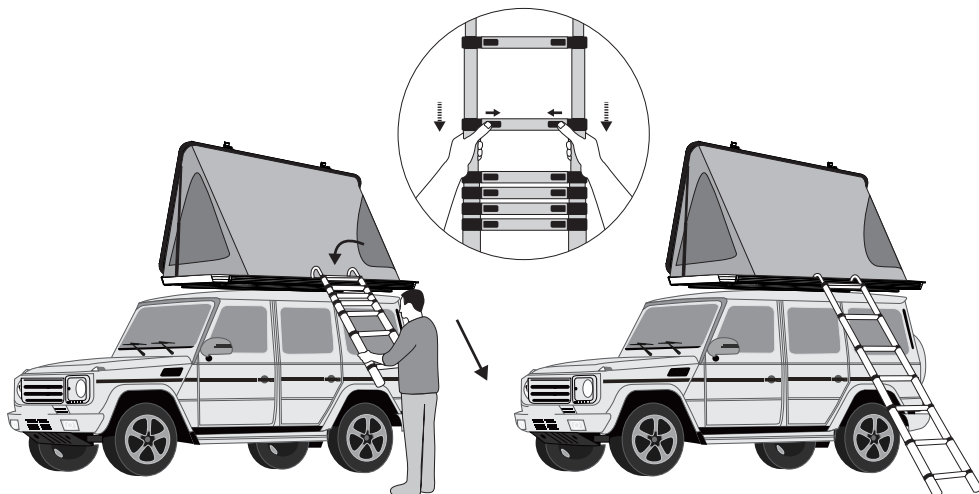
1. Release all buckles around the tent.



2. Push the tent shell upwards.

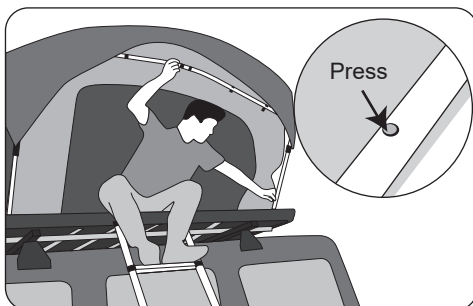
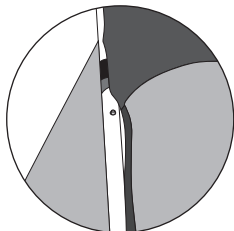


3. Hook the telescoping ladder over the base of the tent and extend downwards..

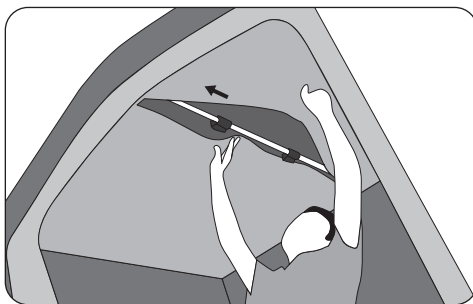
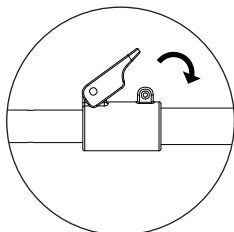


Setting up:

4. Push the button on each side of the front u-pole and carefully extend it until the buttons lock into the upper holes.



5. Unzip the ceiling fabric to expose the dual tensioner pole. Carefully stretch each side and lock each clasp when proper tension is achieved.

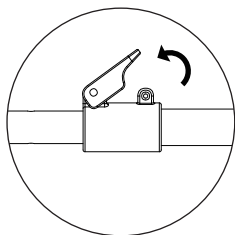


6. Check all straps and buckles to ensure they are snug before use. Tent set-up is complete.

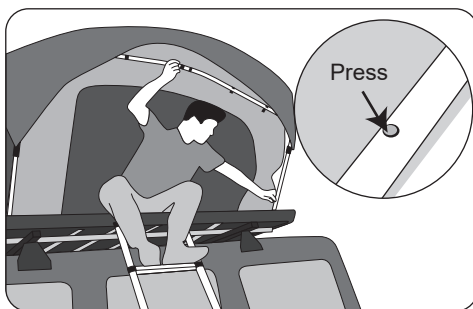


Folding down:

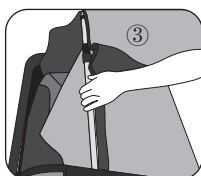
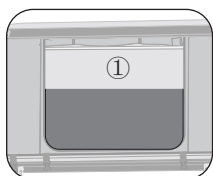
1. Unzip the ceiling fabric and unlock both clasps on the tensioner pole.



2. Push the buttons on the front u-pole and carefully lower until it locks in the lower position.

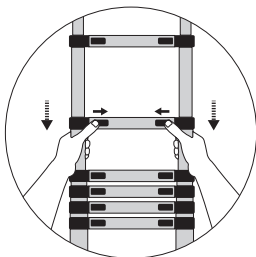


3. Close all windows. Zip up the front door to two thirds position(as ①). Tuck shoes bags inside(as ②). Push over the front U-pole(as ③). Then pull down the shell.

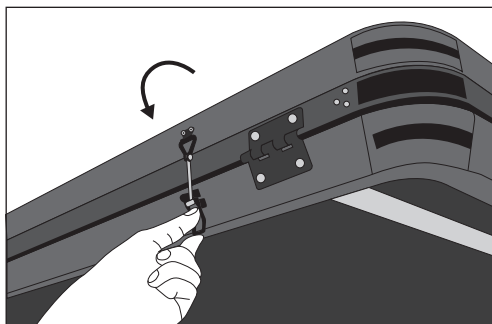


Folding down:

4. Remove the telescopic ladder and store it well in the car.



5. Lock all buckles around the tent.



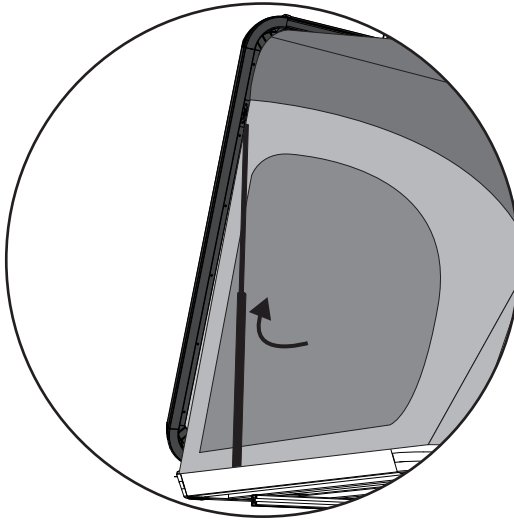
6. The tent is closed. Plz visually inspect the mounting hardware and hand check for tightness.



TROUBLESHOOTING TIPS (IF NEEDED):

Once cylinder rod does not work , pls double check as below.

1. If cylinder rod is covered by any fabric.
2. If there is any air leaking from the cylinder rod. If yes, the cylinder rods need to be replaced.
Loosen the screws of the cylinder rod with a screwdriver, and change a new one. pls see pictures below.



Safety Information

- We recommend that you DO NOT drive over 70mph (110kmh) while using your rooftop tent and that you always adhere to speed limits.
- DO at the start of every journey and at regular intervals during every journey check that your roof tent is firmly fixed to your roof bars and that all of the locking straps are securely fastened. Only ever check your roof tent in a safe and suitable location.
- DO NOT use your roof tent if there is any visible damage to any part of it or its components, instead contact us to see how we can help. This is especially applicable to the locking straps and buckles.
- Understand that secured loads and incorrectly mounted roof bars can come lose during journeys and can cause serious accidents.
- Make sure that you give due consideration to the change in your vehicle height and drive behaviour (side–wind sensitivity, corner and braking behaviour).
- You must always consult your vehicle and roof bar manuals to ensure you are following their advice, these must be always be carried in your vehicle along with your roof tent safety and fitting instructions.
- Do not use bleach, alcohol or ammonia based cleaning liquids on your roof tent otherwise the surface of your roof tent may get damaged
- Please note the following when using your roof tent: –
 - The height of your vehicle can increase by up to 90cm (dependant on your roof bars).
 - Beware of low entrances, low hanging branches, etc.
 - Wind noise may be generated when travelling with a roof tent
 - When using an automatic car–wash facility, your roof tent must first be removed.

–In addition to these usage instructions, due consideration should also be given to mounting instructions for your roof bars and the operating instructions of your vehicle.

–For reasons of fuel economy and the safety of other road users, your roof tent and roof bars should be removed when not in use.

–For your safety, you should only use tested (e.g. GS–tested) roof bars that are authorised for usage in conjunction with your vehicle.

–In order to avoid generating excessive lifting forces, your roof tent should be mounted parallel to the line of the road and not at an angle

- When climbing in and out of your roof tent always use the ladder with due caution and never allow children to use it alone. Make sure the ladder hooks are in good condition, contact us if you need replacements.

- You must not allow any naked flames in or near your roof tent

Important Information

The manufacturer is not liable for any damage or accident that may occur as a result of non– compliance with these usage instructions, modifications made to parts or the usage of any parts other than the manufacturer’ s original parts. The warnings, cautions and instructions in this document can’ t cover every possible situation, so it is understood by the operator that common sense and caution must be applied. It is your responsibility to pass these instructions on to any third party who uses this roof tent, including second hand sales.

Warranty

The manufacturer’s warranty covers manufacturing faults and lasts one year within regular use. It is only valid if the instructions and recommendations in this document are adhered to and only applies to the first owner. Second hand sales are not covered.
